

## Unrestricted Access Teaching Dataset (ONS Opinions Survey, Well-Being Module)

### 2: Introduction and Commentary

Copyright © 2015 John F Hall

[Draft only: 2 May 2015]

The Unrestricted Access Teaching Dataset ([SN7146](#)) contains a selection of 24 variables from the April 2011 wave (See abstract on [SN 7167](#)) of the ONS Opinions Survey, Well-Being Module, April - August 2011 merged waves ([SN 6893](#)) which in turn is part of the regular [Opinions and Lifestyle Survey](#) run in various guises since 1990 by the Office for National Statistics. All data sets are held and distributed by [UK Data Service](#) (UKDS) at Essex University.

[opn\\_teaching\\_dataset.sav](#) (Teaching data set as received from UKDS: [SN7146](#), 24 variables)

Output from SPSS command:

`display labels.`

Variable Labels

Variable	Position	Label
casenew	1	New random ID number
INDWGT	2	Calibration Weight
MCZ_1	3	Overall, how satisfied are you with your life nowadays?
MCZ_2	4	Overall, to what extent feel things you do in your life are worthwhile?
MCZ_3	5	Overall, how happy did you feel yesterday?
MCZ_4	6	Overall, how anxious did you feel yesterday?
MCZ_5a	7	Overall, how satisfied are you with your personal relationships?
MCZ_5b	8	Overall, how satisfied are you with your physical health?
MCZ_5c	9	Overall, how satisfied are you with your mental wellbeing?
MCZ_5d	10	Overall, how satisfied are you with your work situation?
MCZ_5e	11	Overall, how satisfied are you with your financial situation?
MCZ_5f	12	Overall, how satisfied are you with the area where you live?
MCZ_5g	13	Overall, how satisfied with amount of time have to do things like doing?
MCZ_5h	14	Overall, how satisfied are you with the wellbeing of your child/children?
QHealthr	15	How is your health in general
RSEX	16	Sex of Respondent
AGEX	17	Grouped age
marstat3r	18	Marital status 3 cat. (recoded)
highed4	19	What is the highest level of qualification?
Ethnicity2r	20	Ethnicity White/Other (recoded)
DVILO3a	21	DV for ILO in employment - 3 categories
FtPtWk	22	Full or part time work?
NSECAC3	23	NS-SEC 3 categories
GorA	24	Government Office Region

Variables in the working file

This data set was originally prepared for teaching at the Cathie Marsh Centre for Census and Survey Research (now the [Cathie Marsh Institute for Social Research](#)) at Manchester, and was designed for teaching multivariate analysis using Principal Components Analysis and Factor Analysis. This has clearly determined the selection of variables amenable to those methods.

The well-being module of the survey includes a number of questions related to personal well-being and to satisfaction/dissatisfaction (measured on 0-10 scales) with life as a whole and with various life domains (eg housing, neighbourhood, health, work). Within each domain questions are also asked about the respondent's own situation (eg health status, tenure, type of work etc.)

There are no question numbers as such, but the variable names used in the SPSS files are displayed on the questionnaires (which are in CAPI/CATI format).

The subjective measures all begin with **MCZ\_**

**Extract from user guide** [reprinted with permission]

**MCZ\_1 - 4**

These are subjective wellbeing questions which are also running on the IHS. These questions are randomised so that respondents will be asked the 4 questions in 1 of 4 different orders.

**MCZ\_5 - 7**

Subjective wellbeing questions asking about different areas of peoples' lives.

**MCZ\_8 - 15**

Subjective wellbeing questions asking about the local area where the respondent lives. When answering these questions the respondent should consider the local area to be the area within 15-20 minutes walking distance from their home.

**MCZ\_16a – 16f**

Subjective wellbeing questions asking about the quality of public services in this country. It is up to the respondent what they consider 'this country' to mean when answering these questions.

**MCZ\_17a-17d**

Subjective wellbeing questions asking about how much the respondent personally trusts different institutions in this country. It is up to the respondent what they consider 'this country' to mean when answering these questions.

**MCZ\_18-21**


Subjective wellbeing questions asking about different aspects of this country. It is up to the respondent what they consider 'this country' to mean when answering these questions.

Users have unrestricted access to the teaching data set, and also to the user guides for the other surveys, but, to access the data from these and other surveys, you must be a [registered user](#) with UKDS.

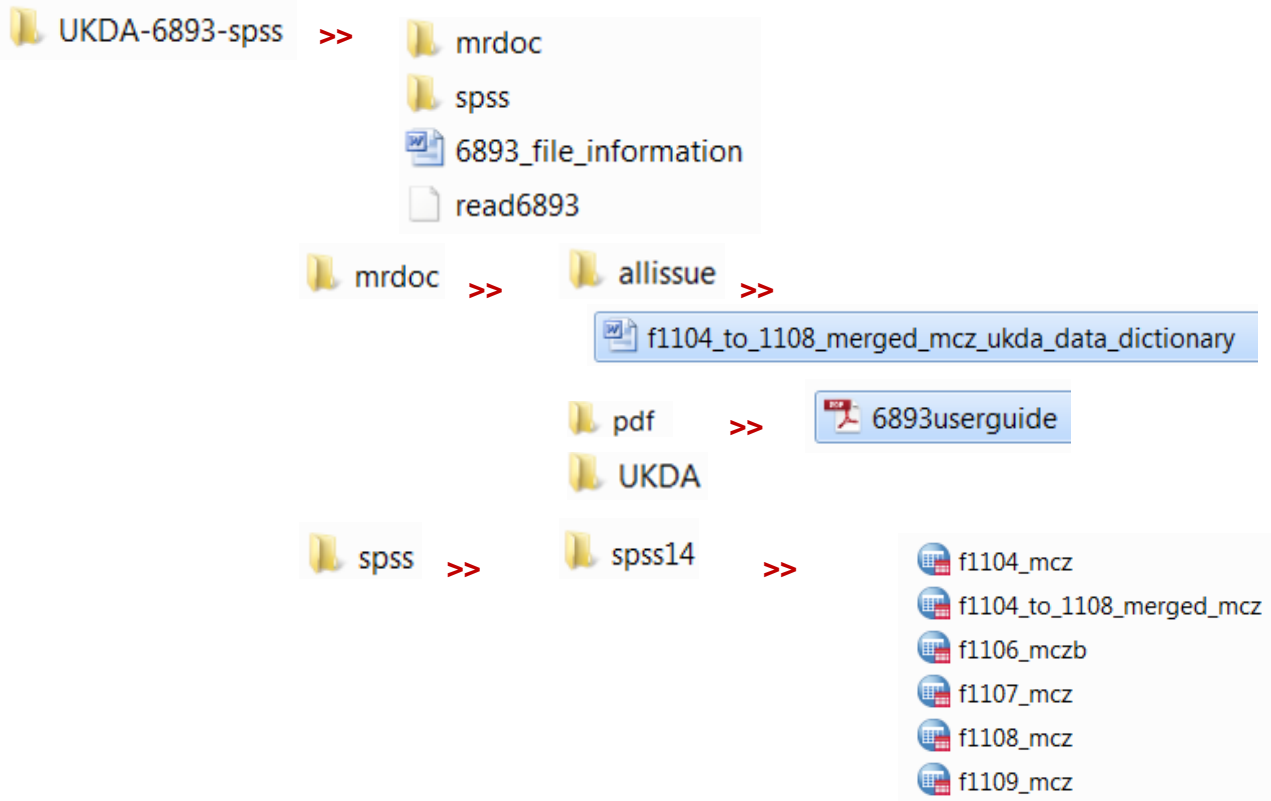
Wave	UKDS SN	Cases	Variables	File name
April – August 2011	<a href="#">SN 6893</a>	4618	112	f1104_to_1108_merged_mcz.sav
April 2011 only	<a href="#">SN 7167</a>	1124	115	f1104_mcz.sav
<b>Teaching data set</b>	<a href="#">SN 7146</a>	1124	24	<b>opn_teaching_data_set.sav</b>
September 2011	<a href="#">SN 7171</a>	1117	139	f1109_mcz.sav

## April – August 2011

UKDS distributes the SPSS version of the April-August 2011 merged file [SN 6893](#) in a zip folder:


 6893SPSS\_8E10BEBDD6ED8FEDC77DC266804748E3

the contents of which are:



The [user guide](#) contains technical information about the survey and also the variable name(s), question wording and the coding system used for the response categories.

**QHealth**      How is your health in general?  
1 Very good  
2 Good  
3 Fair  
4 Bad  
5 Very bad  
8 Refused  
9 Don't know

 f1104\_to\_1108\_merged\_mcz\_ukda\_data\_dictionary has a more detailed display:


**Pos. = 76**      **Variable = QHealth**      **Variable label = How is your health in general?**

This variable is *numeric*, the SPSS measurement level is *scale*.

SPSS user missing values = 8 and 9

Value label information for QHealth

Value = 1	Label = Very good
Value = 2	Label = Good
Value = 3	Label = Fair
Value = 4	Label = Bad
Value = 5	Label = Very bad
Value = 8	Label = Refusal
Value = 9	Label = Don't Know

For the combined April to August waves ([SN 6893](#)) the only subjective variables included in file  f1104\_to\_1108\_merged\_mcz are the four being tested by ONS:

Name	Question
MCZ_1	Overall, how satisfied are you with <b>your life nowadays</b> ? Where nought is 'not at all satisfied' and 10 is 'completely satisfied'.
MCZ_2	Overall, to what extent do you feel that the <b>things you do in your life are worthwhile</b> ? Where nought is 'not at all worthwhile' and 10 is 'completely worthwhile'.
MCZ_3	Overall, <b>how happy did you feel yesterday</b> ? Where nought is 'not at all happy' and 10 is 'completely happy'.
MCZ_4	On a scale where nought is 'not at all anxious' and 10 is 'completely anxious', overall, <b>how anxious did you feel yesterday</b> ?

### April 2011 only

The data for April 2011 only ([SN 7167](#)) are in file  f1104\_mcz This file has eight additional subjective measures:

**MCZ\_5a - MCZ\_5h** Overall, how satisfied are you with **[domain]** nowadays?  
Where nought is 'not at all satisfied' and 10 is 'completely satisfied'

Name	Domain
MCZ_5a	.. <b>your personal relationships</b>
MCZ_5b	.. <b>your physical health</b>
MCZ_5c	.. <b>your mental well-being</b>
MCZ_5d	.. <b>your work situation</b>
MCZ_5e	.. <b>your financial situation</b>
MCZ_5f	.. <b>the area where you live</b>
MCZ_5g	.. <b>the amount of time you have to do things you like doing</b>
MCZ_5h	.. <b>the wellbeing of your child/children</b>

In addition to these subjective measures there are questions about the respondent's actual situation regarding work, health, family etc. The questions regarding work (or seeking work) and household composition are particularly detailed. It must be remembered that the ONS surveys are not designed for academic research or for teaching students in the social sciences, but are commissioned by government departments who are the main clients for the survey.

## Teaching data set (April 2011)

The teaching data set ([SN 7146](#)) contains all 12 of the above subjective measures, but very few of the background variables.

Name	Question/Label
QHealthr	How is your health in general
RSEX	Sex of Respondent
AGEX	Grouped age
marstat3r	Marital status 3 cat. (recoded)
highed4	What is the highest level of qualification?
Ethnicity2r	Ethnicity White/Other (recoded)
DVILO3a	DV for ILO in employment - 3 categories
FtPtWk	Full or part time work?
NSECAC3	NS-SEC 3 categories
GorA	Government Office Region

This data set would be considerably enriched if there were more intra-domain background variables included. There seems little point in having subjective measures of satisfaction with health, job or income without also having measures of actual health, type of work or level of income. Such variables could easily be added to the teaching set without any risk of disclosure.

However, although there are the same number of cases (1124) in the teaching data set as in the full April set they are **not in the same case order**. These means that variables from the full April file cannot be copied into the teaching file: a new data set has to be created by selecting out all the above measures, then adding a more comprehensive set of background variables.

At the very least the additional variables should include:

Name	Question/Label
TENgrp	Grouped Tenure
RAGE	Respondent's age
EdAgeCor	How old were you when you finished full time education?
LSIll	Have any long-standing illness, disability or infirmity?
IllLim	Does this illness or disability limit your activities in any way?
Stat	Working as an employee or self-employed?
sumgross	Gross Annual Income

Other classification variables have more categories for level of work, education etc and could be substituted for those with fewer categories in the teaching set.

## September 2011

The September 2011 wave ([SN 7171](#)) carries an additional set of subjective questions, none of which are in the data sets listed above (but far more interesting for measuring personal well-being):

### Personal

- MCZ\_6 To what extent do you feel that **you have anyone to discuss personal matters with?**  
MCZ\_7 To what extent do you feel **you have any relatives, friends or neighbours that you can ask for help?**

### Local area

- MCZ\_8 Overall, how satisfied are you with the **local area where you live?**  
MCZ\_9 To what extent do you feel that you are **involved in the local area** where you live?  
MCZ\_10 To what extent do you feel you **belong in the local area** where you live ?  
MCZ\_11 To what extent feel **local area is place where people from different backgrounds get on well together?**  
MCZ\_12 To what extent do you feel **you can influence local decisions?**  
MCZ\_13 To what extent do you feel people in this local area pull together to improve the neighbourhood?  
MCZ\_14 How satisfied with **public gardens, parks, commons, other green spaces in local area** where you live?  
MCZ\_15 How **safe** would you feel **walking alone in this local area after dark?**

### Public services

- MCZ\_16a In general, how would you rate the quality of **public health services** in this country?  
MCZ\_16b In general, how would you rate the quality of the **state education system** (in this country)?  
MCZ\_16c In general, how would you rate the quality of **public transport** (in this country)?  
MCZ\_16d In general, how would you rate the quality of **state childcare services** (in this country)?  
MCZ\_16e In general, how would you rate the quality of **care services for the elderly** (in this country)?  
MCZ\_16f In general, how would you rate the quality of the **state pension system** (in this country)?

### Trust

- MCZ\_5 To what extent do you feel **most people can be trusted?**  
MCZ\_17a How much do you personally **trust the legal system** in this country?  
MCZ\_17b How much do you personally **trust the police** (in this country)?  
MCZ\_17c How much do you personally **trust the media** (in this country)?  
MCZ\_17d How much do you personally **trust the political system** (in this country)?

### This country

- MCZ\_18 To what extent do you feel **informed about new and current affairs** affecting this country?  
MCZ\_19 How **satisfied** are you with **living in this country?**  
MCZ\_20 How **optimistic** are you about the **future of this country?**  
MCZ\_21 Over next 12 months, think **overall situation of this country will get better, stay the same, get worse?**

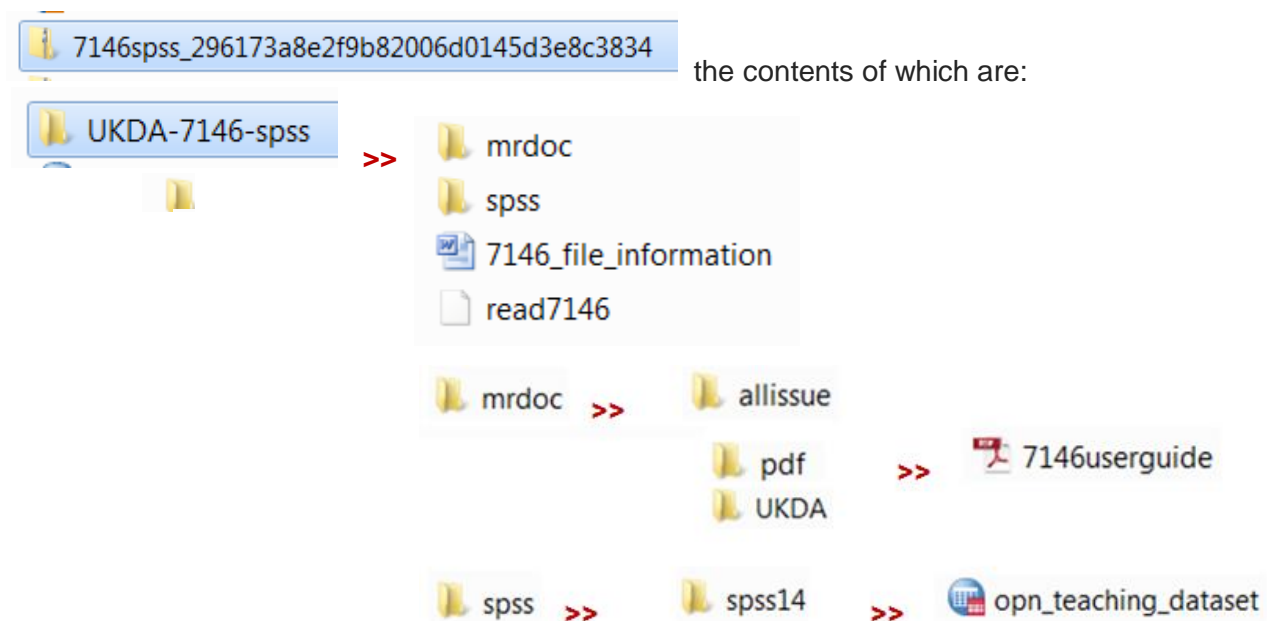
[ONS Opinions Survey, Well-Being Module, April 2011: Unrestricted Access Teaching Dataset \(SN7146\)](#)

**Extract from [user guide](#)** [reproduced with permission]

"The OPN, Well-Being Module, April 2011: Unlimited Access Teaching Dataset contains 24 variables; 13 well-being questions and some standard socio-demographic variables. The variables have been chosen to enable new users to explore the data and apply some basic data reduction techniques such as Principal Component Analysis or Factor Analysis.

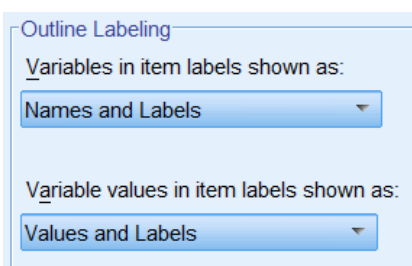
Details of the variables selected for the Unrestricted Access Teaching Dataset are given below, including a data dictionary which lists information about variable names, values, labels, missing values and frequency. The name of the variables and their labels remain the same or very close to the original OPN dataset. However, due to concerns about statistical disclosure, some variables have been recoded and their level of detail reduced. Variables that differ from the original OPN have been suffixed "r". The syntax for how these variables were recoded is in Appendix II. In addition, a new ID variable was created in order to avoid linking the Unrestricted Access Teaching Dataset with the original dataset. The wording of the questions on the well-being module is listed in Appendix III. A copy of the questionnaire showing the exact question wording can be found on the ESDS webpage"

UKDS distributes the SPSS version of the file in a zip folder:




The key files you need are 7146userguide and the SPSS saved file opn\_teaching\_dataset

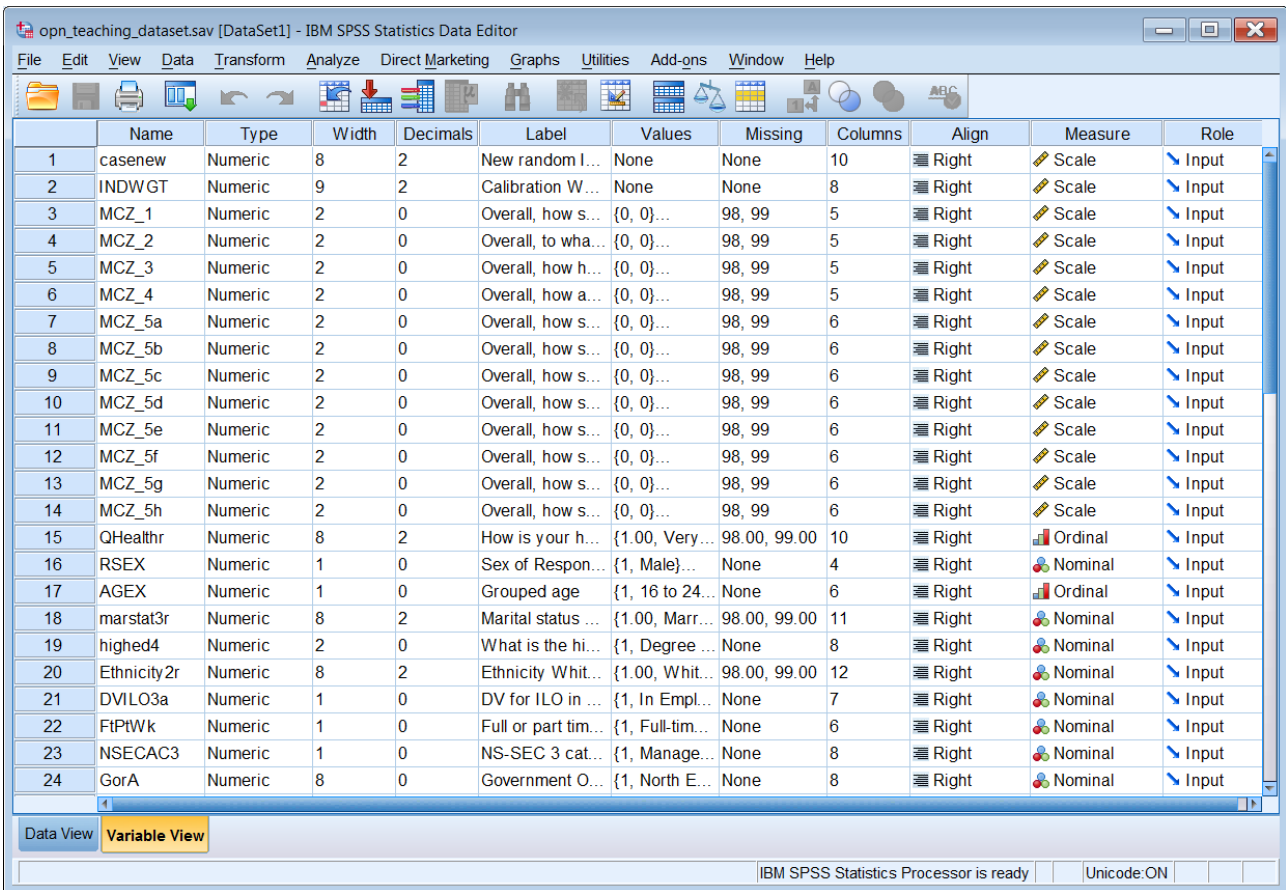
As received the output options are set to display **Names and labels** for variables, and to **Values and Labels** for values



For exploring the file in relation to the questionnaire it is useful to have both, but for publication of less cluttered tables and charts in reports etc., the SPSS settings can be changed to **Labels** using **Edit >> Options >> Output**

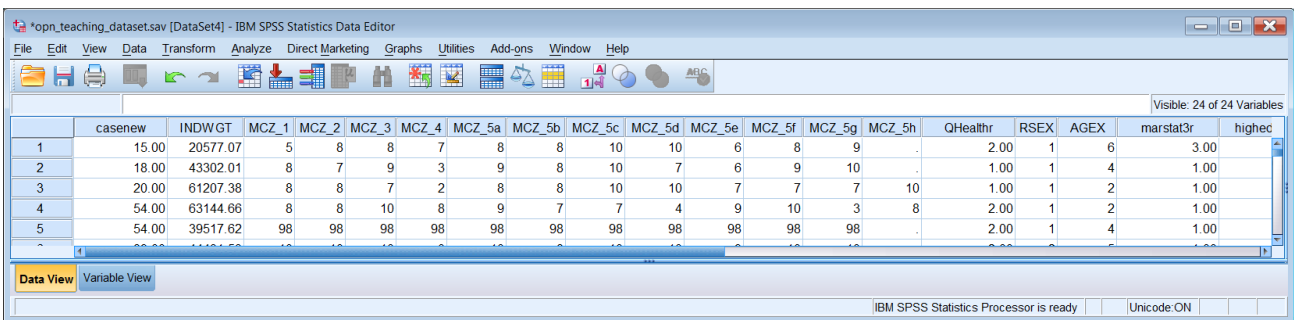


Distributed SPSS file  `opn_teaching_dataset` when first opened in **Variable View** has 24 variables selected from the full April 2011 file:



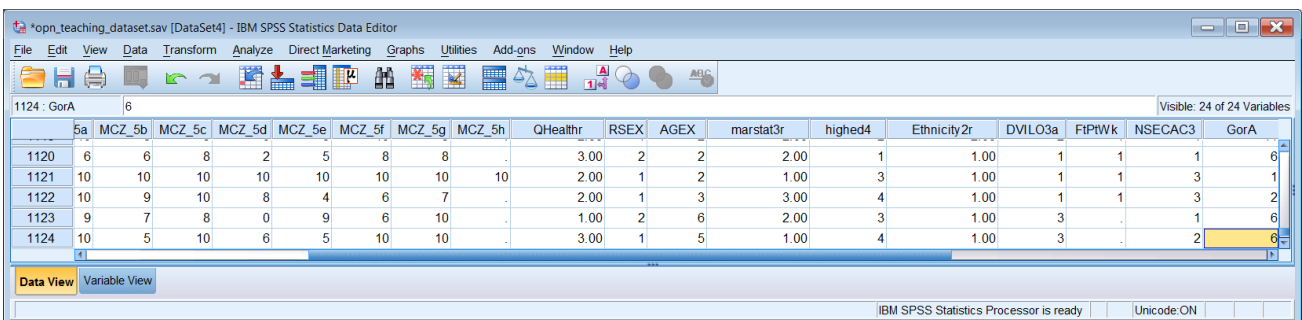
	Name	Type	Width	Decimals	Label	Values	Missing	Columns	Align	Measure	Role
1	casenew	Numeric	8	2	New random I...	None	None	10	Right	Scale	Input
2	INDWGT	Numeric	9	2	Calibration W...	None	None	8	Right	Scale	Input
3	MCZ_1	Numeric	2	0	Overall, how s...	{0, 0}...	98, 99	5	Right	Scale	Input
4	MCZ_2	Numeric	2	0	Overall, to wha...	{0, 0}...	98, 99	5	Right	Scale	Input
5	MCZ_3	Numeric	2	0	Overall, how h...	{0, 0}...	98, 99	5	Right	Scale	Input
6	MCZ_4	Numeric	2	0	Overall, how a...	{0, 0}...	98, 99	5	Right	Scale	Input
7	MCZ_5a	Numeric	2	0	Overall, how s...	{0, 0}...	98, 99	6	Right	Scale	Input
8	MCZ_5b	Numeric	2	0	Overall, how s...	{0, 0}...	98, 99	6	Right	Scale	Input
9	MCZ_5c	Numeric	2	0	Overall, how s...	{0, 0}...	98, 99	6	Right	Scale	Input
10	MCZ_5d	Numeric	2	0	Overall, how s...	{0, 0}...	98, 99	6	Right	Scale	Input
11	MCZ_5e	Numeric	2	0	Overall, how s...	{0, 0}...	98, 99	6	Right	Scale	Input
12	MCZ_5f	Numeric	2	0	Overall, how s...	{0, 0}...	98, 99	6	Right	Scale	Input
13	MCZ_5g	Numeric	2	0	Overall, how s...	{0, 0}...	98, 99	6	Right	Scale	Input
14	MCZ_5h	Numeric	2	0	Overall, how s...	{0, 0}...	98, 99	6	Right	Scale	Input
15	QHealthr	Numeric	8	2	How is your h...	{1.00, Very...	98.00, 99.00	10	Right	Ordinal	Input
16	RSEX	Numeric	1	0	Sex of Respon...	{1, Male}...	None	4	Right	Nominal	Input
17	AGEX	Numeric	1	0	Grouped age	{1, 16 to 24...	None	6	Right	Ordinal	Input
18	marstat3r	Numeric	8	2	Marital status ...	{1.00, Marr...	98.00, 99.00	11	Right	Nominal	Input
19	highed4	Numeric	2	0	What is the hi...	{1, Degree ...	None	8	Right	Nominal	Input
20	Ethnicity2r	Numeric	8	2	Ethnicity Whit...	{1.00, Whit...	98.00, 99.00	12	Right	Nominal	Input
21	DVILO3a	Numeric	1	0	DV for ILO in ...	{1, In Empl...	None	7	Right	Nominal	Input
22	FtPtWk	Numeric	1	0	Full or part tim...	{1, Full-tim...	None	6	Right	Nominal	Input
23	NSECAC3	Numeric	1	0	NS-SEC 3 cat...	{1, Manage...	None	8	Right	Nominal	Input
24	GorA	Numeric	8	0	Government O...	{1, North E...	None	8	Right	Nominal	Input

.. and 1124 cases. Switch to **Data View**:



	casenew	INDWGT	MCZ_1	MCZ_2	MCZ_3	MCZ_4	MCZ_5a	MCZ_5b	MCZ_5c	MCZ_5d	MCZ_5e	MCZ_5f	MCZ_5g	MCZ_5h	QHealthr	RSEX	AGEX	marstat3r	highed4
1	15.00	20577.07	5	8	8	7	8	8	10	10	6	8	9	.	2.00	1	6	3.00	
2	18.00	43302.01	8	7	9	3	9	8	10	7	6	9	10	.	1.00	1	4	1.00	
3	20.00	61207.38	8	8	7	2	8	8	10	10	7	7	7	10	1.00	1	2	1.00	
4	54.00	63144.66	8	8	10	8	9	7	7	4	9	10	3	8	2.00	1	2	1.00	
5	54.00	39517.62	98	98	98	98	98	98	98	98	98	98	98	.	2.00	1	4	1.00	

**Ctrl+End**



	5a	MCZ_5b	MCZ_5c	MCZ_5d	MCZ_5e	MCZ_5f	MCZ_5g	MCZ_5h	QHealthr	RSEX	AGEX	marstat3r	highed4	Ethnicity2r	DVILO3a	FtPtWk	NSECAC3	GorA
1120	6	6	8	2	5	8	8	.	3.00	2	2	2.00	1	1.00	1	1	1	6
1121	10	10	10	10	10	10	10	10	2.00	1	2	1.00	3	1.00	1	1	3	1
1122	10	9	10	8	4	6	7	.	2.00	1	3	3.00	4	1.00	1	1	3	2
1123	9	7	8	0	9	6	10	.	1.00	2	6	2.00	3	1.00	3	.	1	6
1124	10	5	10	6	5	10	10	.	3.00	1	5	1.00	4	1.00	3	.	2	6





This produces a narrow table in the **Viewer** which needs to be modified by double clicking on it

to open a **Pivot table**:

**Initial output**

**Variable Labels**

Variable	Position	Label
casenew	1	New random ID number
INDWGT	2	Calibration Weight
MCZ_1	3	Overall, how satisfied are you with your life nowadays?
MCZ_2	4	Overall, to what extent feel things you do in your life are worthwhile?
MCZ_3	5	Overall, how happy did you feel yesterday?
MCZ_4	6	Overall, how anxious did you feel yesterday?
MCZ_5a	7	Overall, how satisfied are you with your personal relationships?

**Pivot table**

The screenshot shows a Pivot Table window titled "Variable Labels". The table is narrow, with the labels for positions 3 through 7 wrapped across multiple columns. The labels are: "Overall, how satisfied are you with your life nowadays?", "Overall, to what extent feel things you do in your life are worthwhile?", "Overall, how happy did you feel yesterday?", "Overall, how anxious did you feel yesterday?", and "Overall, how satisfied are you with your personal relationships?".

Drag the right edge of the pivot table out until you get all the labels on a single line:

The screenshot shows the same Pivot Table window, but the right edge has been dragged out, making the table wide enough to fit all labels on a single line. The table now lists 24 variables with their positions and full labels.

Variable	Position	Label
casenew	1	New random ID number
INDWGT	2	Calibration Weight
MCZ_1	3	Overall, how satisfied are you with your life nowadays?
MCZ_2	4	Overall, to what extent feel things you do in your life are worthwhile?
MCZ_3	5	Overall, how happy did you feel yesterday?
MCZ_4	6	Overall, how anxious did you feel yesterday?
MCZ_5a	7	Overall, how satisfied are you with your personal relationships?
MCZ_5b	8	Overall, how satisfied are you with your physical health?
MCZ_5c	9	Overall, how satisfied are you with your mental wellbeing?
MCZ_5d	10	Overall, how satisfied are you with your work situation?
MCZ_5e	11	Overall, how satisfied are you with your financial situation?
MCZ_5f	12	Overall, how satisfied are you with the area where you live?
MCZ_5g	13	Overall, how satisfied with amount of time have to do things like doing?
MCZ_5h	14	Overall, how satisfied are you with the wellbeing of your child/children?
QHealthr	15	How is your health in general
RSEX	16	Sex of Respondent
AGEX	17	Grouped age
marstat3r	18	Marital status 3 cat. (recoded)
highe4	19	What is the highest level of qualification?
Ethnicity2r	20	Ethnicity White/Other (recoded)
DVIL03a	21	DV for ILO in employment - 3 categories
FIPWk	22	Full or part time work?
NSECAC3	23	NS-SEC 3 categories
GovA	24	Government Office Region

Variables in the working file

Closing the Pivot table leaves a (double-spaced) table in the **Viewer** which can then be copied and pasted into Word, and modified to single spacing as below:

### Variable Labels

Variable	Position	Label
casenew	1	New random ID number
INDWGT	2	Calibration Weight
MCZ_1	3	Overall, how satisfied are you with your life nowadays?
MCZ_2	4	Overall, to what extent feel things you do in your life are worthwhile?
MCZ_3	5	Overall, how happy did you feel yesterday?
MCZ_4	6	Overall, how anxious did you feel yesterday?
MCZ_5a	7	Overall, how satisfied are you with your personal relationships?
MCZ_5b	8	Overall, how satisfied are you with your physical health?
MCZ_5c	9	Overall, how satisfied are you with your mental wellbeing?
MCZ_5d	10	Overall, how satisfied are you with your work situation?
MCZ_5e	11	Overall, how satisfied are you with your financial situation?
MCZ_5f	12	Overall, how satisfied are you with the area where you live?
MCZ_5g	13	Overall, how satisfied with amount of time have to do things like doing?
MCZ_5h	14	Overall, how satisfied are you with the wellbeing of your child/children?
QHealthr	15	How is your health in general
RSEX	16	Sex of Respondent
AGEX	17	Grouped age
marstat3r	18	Marital status 3 cat. (recoded)
highed4	19	What is the highest level of qualification?
Ethnicity2r	20	Ethnicity White/Other (recoded)
DVIL03a	21	DV for ILO in employment - 3 categories
FtPtWk	22	Full or part time work?
NSECAC3	23	NS-SEC 3 categories
GorA	24	Government Office Region

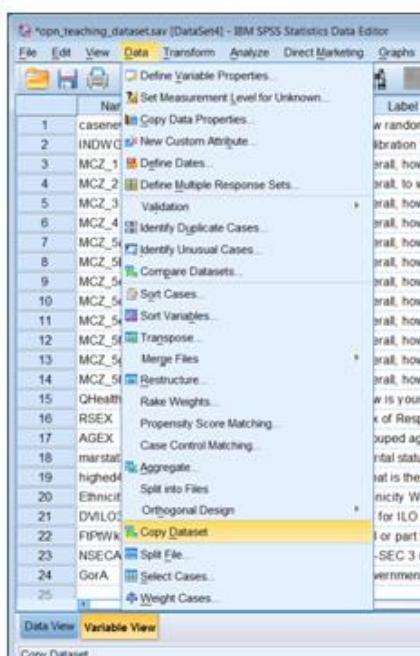
Variables in the working file

**Golden rule: Never change an original file! Always make a copy** of the data set before doing any further analysis or making any changes. There are two ways to do this:

### Method 1

**Data >> Copy Dataset**

A new **Data Editor** is created containing a copy of the data, with the next available **Untitled** name, in this case **\*Untitled2**:



	Name	Type	Width	Decimals	Label
1	casenew	Numeric	8	2	New random I...
2	INDWGT	Numeric	9	2	Calibration W...
3	MCZ_1	Numeric	2	0	Overall, how s...
4	MCZ_2	Numeric	2	0	Overall, to wha...
5	MCZ_3	Numeric	2	0	Overall, how h...
6	MCZ_4	Numeric	2	0	Overall, how a...
7	MCZ_5a	Numeric	2	0	Overall, how s...
8	MCZ_5b	Numeric	2	0	Overall, how s...
9	MCZ_5c	Numeric	2	0	Overall, how s...
10	MCZ_5d	Numeric	2	0	Overall, how s...
11	MCZ_5e	Numeric	2	0	Overall, how s...
12	MCZ_5f	Numeric	2	0	Overall, how s...
13	MCZ_5g	Numeric	2	0	Overall, how s...
14	MCZ_5h	Numeric	2	0	Overall, how s...

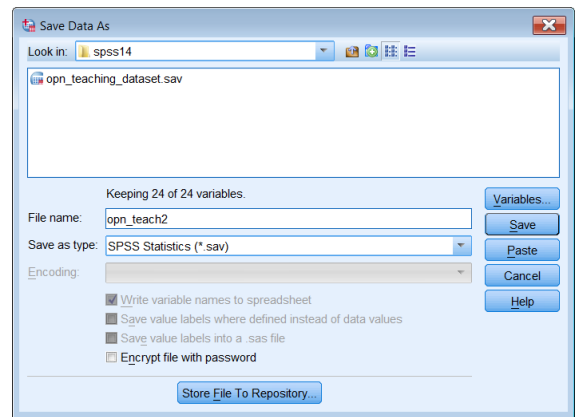
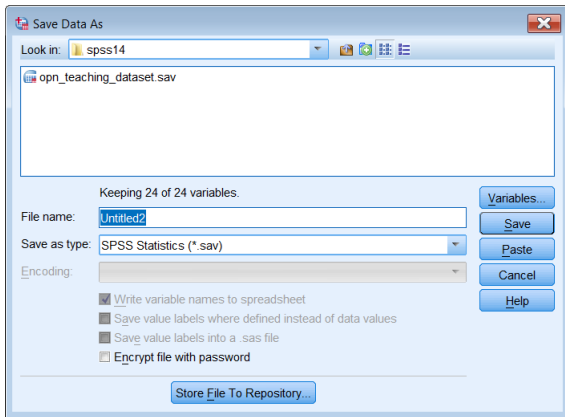
	Name	Type	Width	Decimals
1	casenew	Numeric	8	2
2	INDWGT	Numeric	9	2

You can continue working with **\*Untitled2** or save the file with a memorable name:

**File >> Save As**

Change **Untitled2** to . . .

**opn\_teach2** (or whatever)



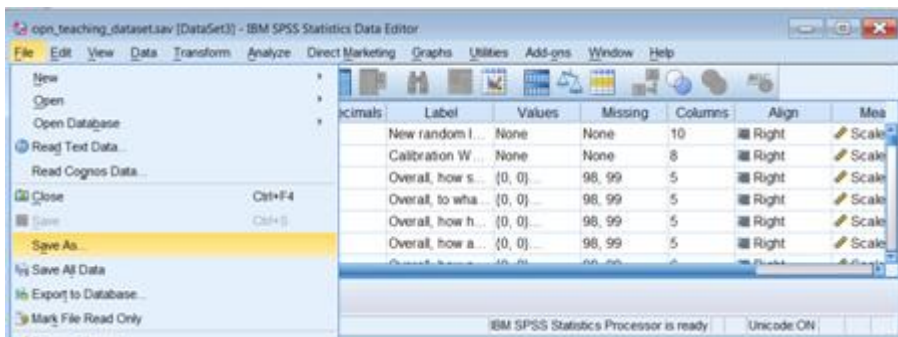
Click on **Save**

	Name	Type	Width	Decimals
1	casenew	Numeric	8	2
2	INDWGT	Numeric	9	2
3	MCZ_1	Numeric	2	0

. . . and proceed to work with this file.

## Method 2

**File >> Save as**

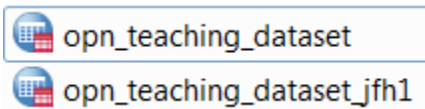


File name: **opn\_teaching\_dataset.sav**

Change the file name (in my case by adding an underscore **\_** my initials **jfh** and edition number **1**)

File name: **opn\_teaching\_dataset.sav\_jfh1**

Click on **Save** and the copy will appear in the folder from which you are working.



Use the copy for all future work: do **NOT** work on the original !!

It doesn't matter which method you use, but I generally use method 2.

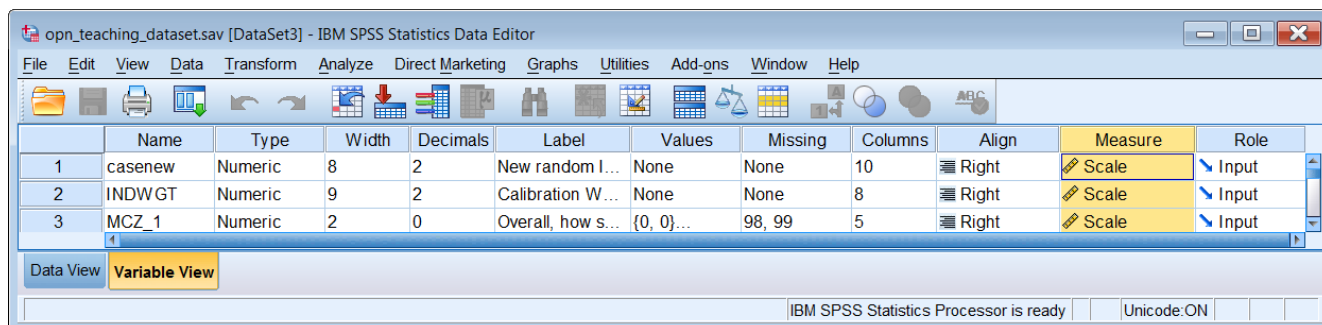
### Changing the order of variable attributes

I also prefer to change the order of the attribute columns in **Variable View** so that the more important attributes are moved to the left. I prefer to work with **Name, Measure, Label, Values, Missing** and **Decimals** (in that order) to the left of the **Data Editor** and all other attributes moved to the right or not displayed at all. You can modify the **Data Editor** to display variable attributes in a different order or even hide them.

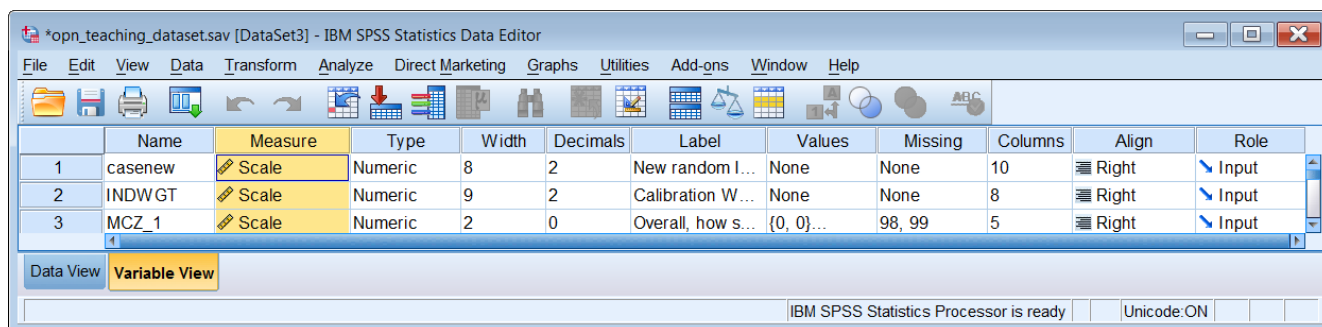
Again, there are two ways to do this.

#### Method 1

Click on the column header to highlight the column you want to move, then hold the left mouse down over the header and drag the column to a new position (a thin red line will indicate where the new position will be). For example, to move the **Measure** column, click on **Measure**

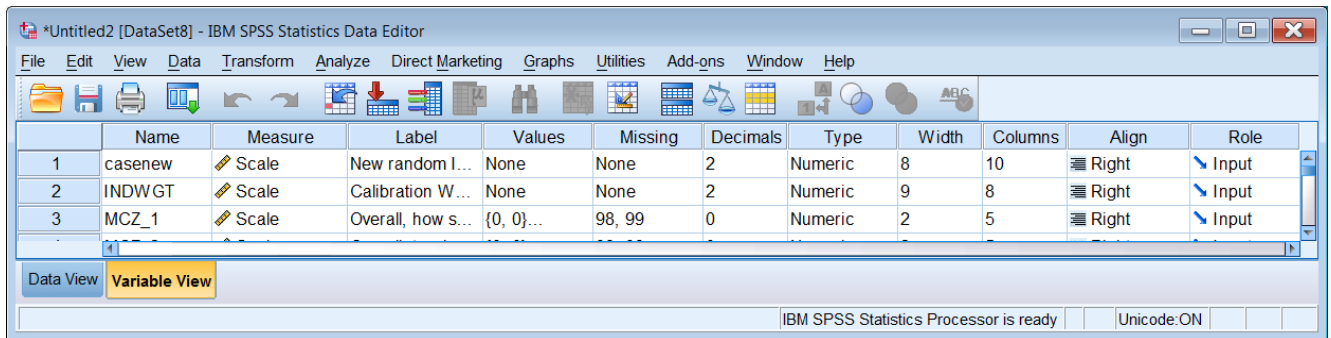


Click and hold left mouse down on **Measure** and drag the whole column to just after **Name**:

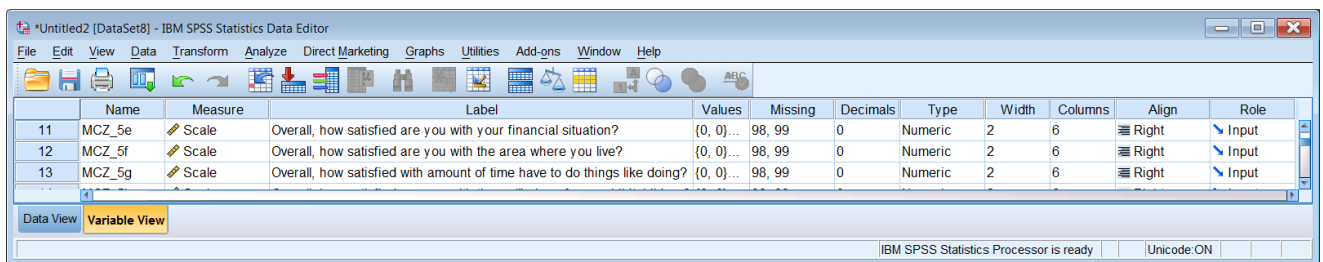




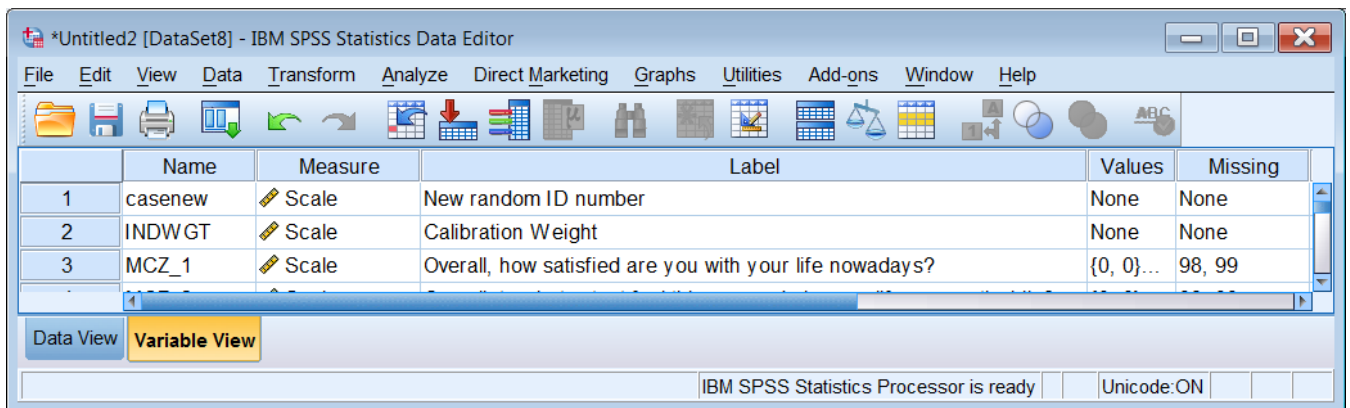
Repeat the process with columns for **Label**, **Values**, **Missing** and **Decimals**



You can't read the contents of **Labels**, so drag the column separators out to see the full text of the longest label:

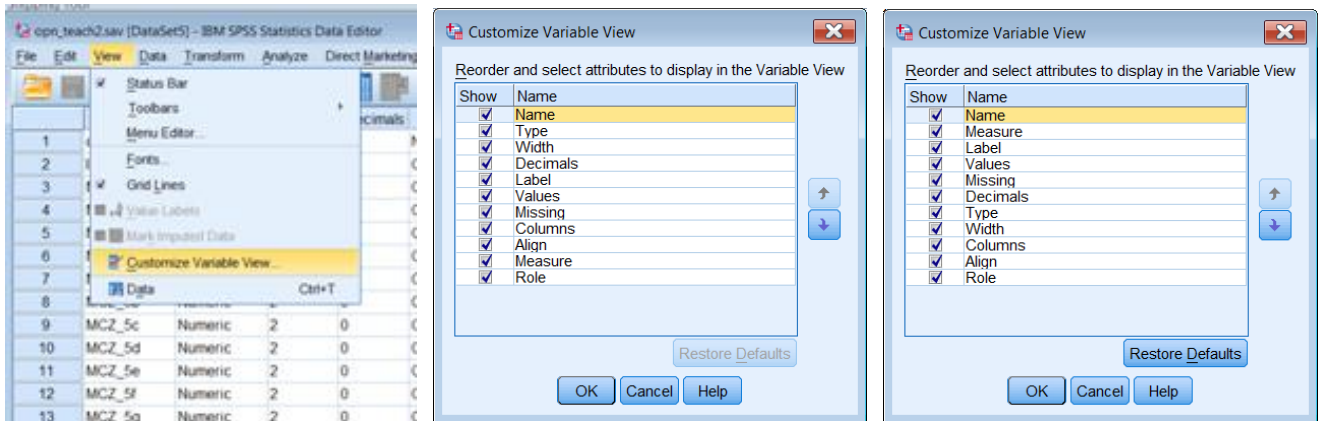


At this stage you don't really need **Type**, **Width**, **Columns**, **Align** or **Role** so you can drag the right edge of the **Data Editor** inwards to display only the important columns:

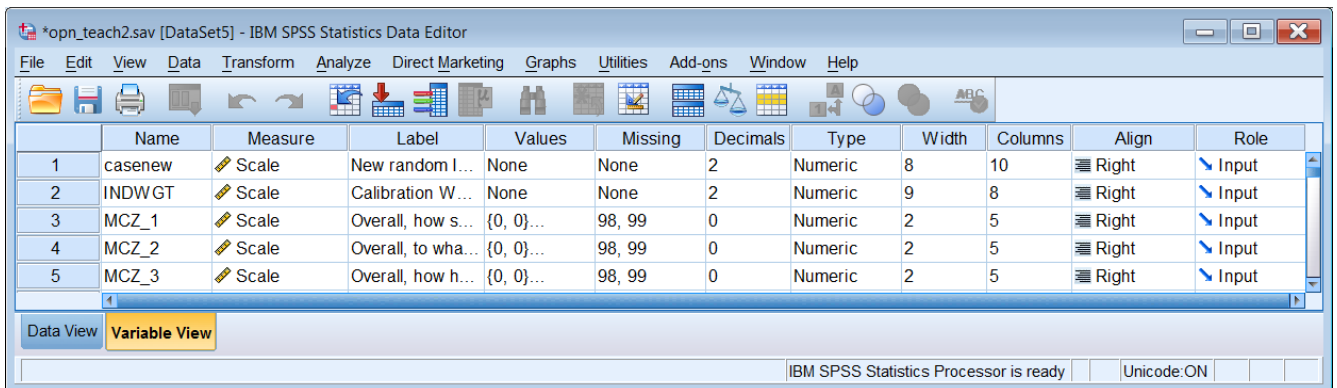


## Method 2

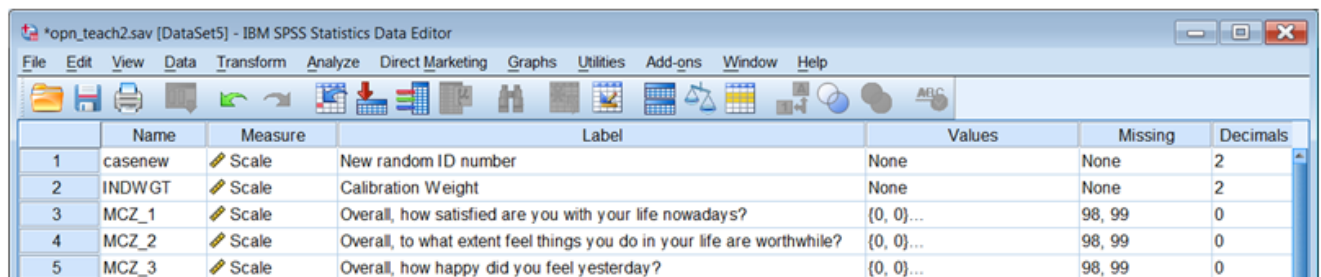
### View >> Customise Variable View



In the 2<sup>nd</sup> pane (above centre) you can move the attributes up or down the precedence order by clicking on the blue arrows on the right (the new order appears in the pane) or hide them by un-checking the boxes on the left. However, these new settings will apply to every SPSS file you open in the current session, so best not to hide anything until you're absolutely sure.



You need to drag the margins out again, but you don't really need **Type**, **Width**, **Columns**, **Align** or **Role**, so you bring the right margin in to hide them:



In the following pages I have saved the modified file as **opn\_teaching\_dataset\_jfh1.sav**

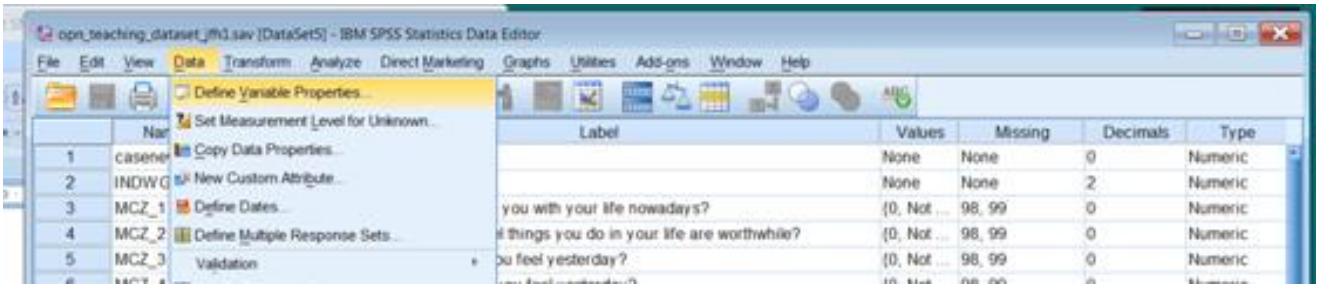


	Name	Measure	Label	Values	Missing	Decimals	Type	Width	Columns	Align	Role
1	casenew	Scale	New ran...	None	None	2	Numeric	8	10	Right	Input
2	INDWGT	Scale	Calibrati...	None	None	2	Numeric	9	8	Right	Input
3	MCZ_1	Scale	Overall, ...	{0, 0}...	98, 99	0	Numeric	2	5	Right	Input
4	MCZ_2	Scale	Overall, ...	{0, 0}...	98, 99	0	Numeric	2	5	Right	Input
5	MCZ_3	Scale	Overall, ...	{0, 0}...	98, 99	0	Numeric	2	5	Right	Input
6	MCZ_4	Scale	Overall, ...	{0, 0}...	98, 99	0	Numeric	2	5	Right	Input
7	MCZ_5a	Scale	Overall, ...	{0, 0}...	98, 99	0	Numeric	2	6	Right	Input
8	MCZ_5b	Scale	Overall, ...	{0, 0}...	98, 99	0	Numeric	2	6	Right	Input
9	MCZ_5c	Scale	Overall, ...	{0, 0}...	98, 99	0	Numeric	2	6	Right	Input
10	MCZ_5d	Scale	Overall, ...	{0, 0}...	98, 99	0	Numeric	2	6	Right	Input
11	MCZ_5e	Scale	Overall, ...	{0, 0}...	98, 99	0	Numeric	2	6	Right	Input
12	MCZ_5f	Scale	Overall, ...	{0, 0}...	98, 99	0	Numeric	2	6	Right	Input
13	MCZ_5g	Scale	Overall, ...	{0, 0}...	98, 99	0	Numeric	2	6	Right	Input
14	MCZ_5h	Scale	Overall, ...	{0, 0}...	98, 99	0	Numeric	2	6	Right	Input
15	QHealthr	Ordinal	How is ...	{1, 00, V...	98.00, 99.00	2	Numeric	8	10	Right	Input
16	RSEX	Nominal	Sex of ...	{1, Male...	None	0	Numeric	1	4	Right	Input
17	AGEX	Ordinal	Grouped...	{1, 16 t...	None	0	Numeric	1	6	Right	Input
18	marstat3r	Nominal	Marital ...	{1, 00, ...	98.00, 99.00	2	Numeric	8	11	Right	Input
19	highed4	Nominal	What is...	{1, Deg...	None	0	Numeric	2	8	Right	Input
20	Ethnicity2r	Nominal	Ethnicit...	{1, 00, ...	98.00, 99.00	2	Numeric	8	12	Right	Input
21	DVIL03a	Nominal	DV for I...	{1, In E...	None	0	Numeric	1	7	Right	Input
22	FIPWk	Nominal	Full or p...	{1, Full-t...	None	0	Numeric	1	6	Right	Input
23	NSECAC3	Nominal	NS-SE...	{1, Man...	None	0	Numeric	1	8	Right	Input
24	GorA	Nominal	Govern...	{1, Nort...	None	0	Numeric	8	8	Right	Input

Widen **Label** and **Values** by dragging the column separators until you can see full contents:

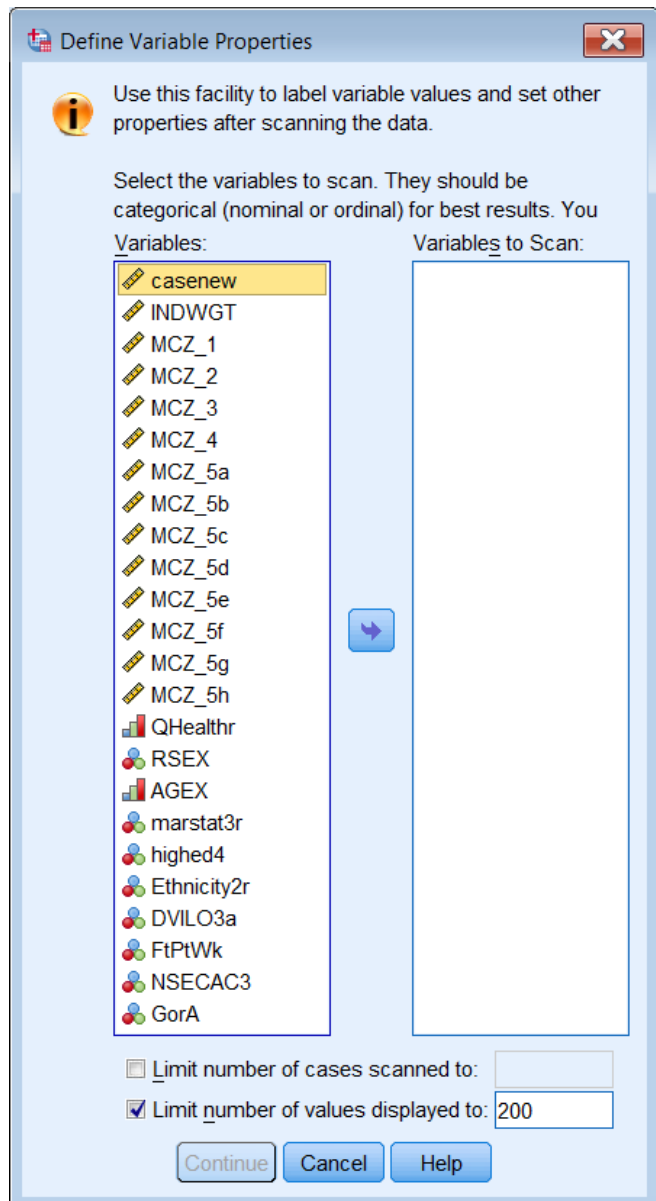
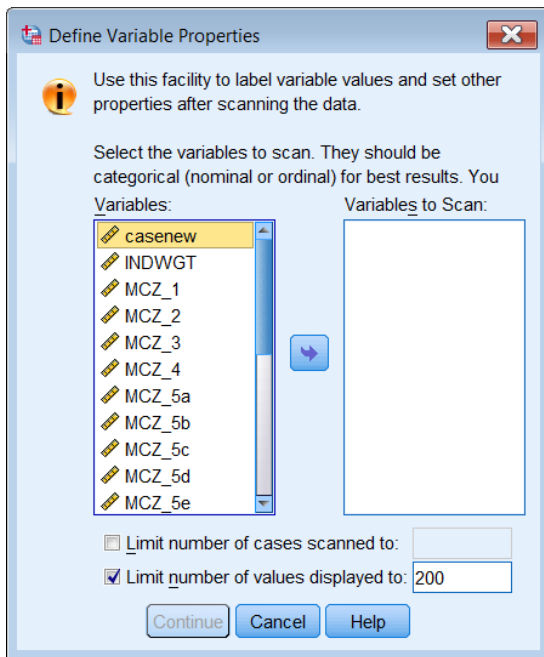
	Name	Measure	Label	Values	Missing	Decimals
1	casenew	Scale	New random ID number	None	None	2
2	INDWGT	Scale	Calibration Weight	None	None	2
3	MCZ_1	Scale	Overall, how satisfied are you with your life nowadays?	{0, 0}...	98, 99	0
4	MCZ_2	Scale	Overall, to what extent feel things you do in your life are worthwhile?	{0, 0}...	98, 99	0
5	MCZ_3	Scale	Overall, how happy did you feel yesterday?	{0, 0}...	98, 99	0
6	MCZ_4	Scale	Overall, how anxious did you feel yesterday?	{0, 0}...	98, 99	0
7	MCZ_5a	Scale	Overall, how satisfied are you with your personal relationships?	{0, 0}...	98, 99	0
8	MCZ_5b	Scale	Overall, how satisfied are you with your physical health?	{0, 0}...	98, 99	0
9	MCZ_5c	Scale	Overall, how satisfied are you with your mental wellbeing?	{0, 0}...	98, 99	0
10	MCZ_5d	Scale	Overall, how satisfied are you with your work situation?	{0, 0}...	98, 99	0
11	MCZ_5e	Scale	Overall, how satisfied are you with your financial situation?	{0, 0}...	98, 99	0
12	MCZ_5f	Scale	Overall, how satisfied are you with the area where you live?	{0, 0}...	98, 99	0
13	MCZ_5g	Scale	Overall, how satisfied with amount of time have to do things like doing?	{0, 0}...	98, 99	0
14	MCZ_5h	Scale	Overall, how satisfied are you with the wellbeing of your child/children?	{0, 0}...	98, 99	0
15	QHealthr	Ordinal	How is your health in general	{1, 00, Very good}...	98.00, 99.00	2
16	RSEX	Nominal	Sex of Respondent	{1, Male}...	None	0
17	AGEX	Ordinal	Grouped age	{1, 16 to 24}...	None	0
18	marstat3r	Nominal	Marital status 3 cat. (recoded)	{1, 00, Married/Cohabiting (incl...	98.00, 99.00	2
19	highed4	Nominal	What is the highest level of qualification?	{1, Degree or equivalent}...	None	0
20	Ethnicity2r	Nominal	Ethnicity White/Other (recoded)	{1, 00, White}...	98.00, 99.00	2
21	DVIL03a	Nominal	DV for ILO in employment - 3 categories	{1, In Employment}...	None	0
22	FIPWk	Nominal	Full or part time work?	{1, Full-time}...	None	0
23	NSECAC3	Nominal	NS-SEC 3 categories	{1, Managerial and professiona...	None	0
24	GorA	Nominal	Government Office Region	{1, North East}...	None	0


Quick check with **Data >> Define Variable Properties**




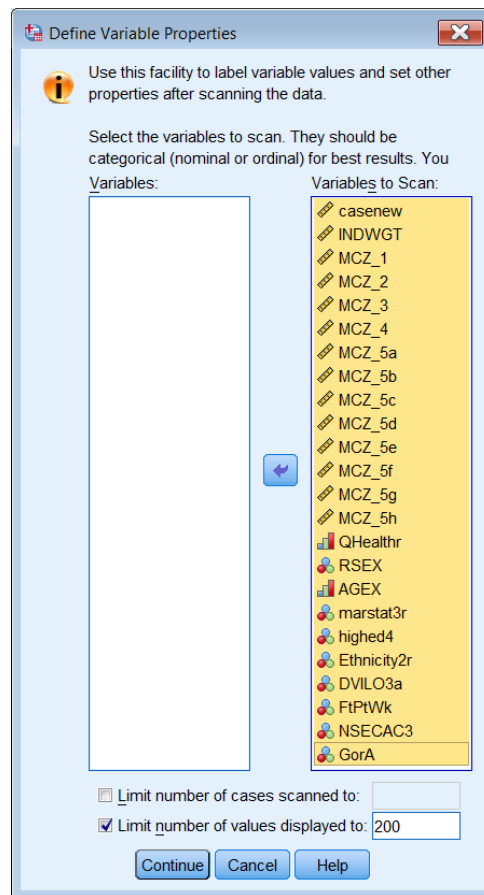
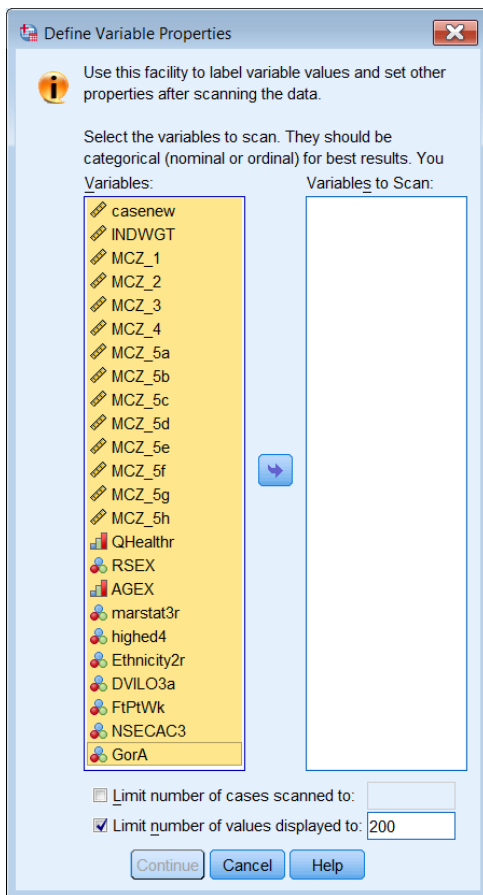
Default display

1: Drag lower edge down to reveal full list

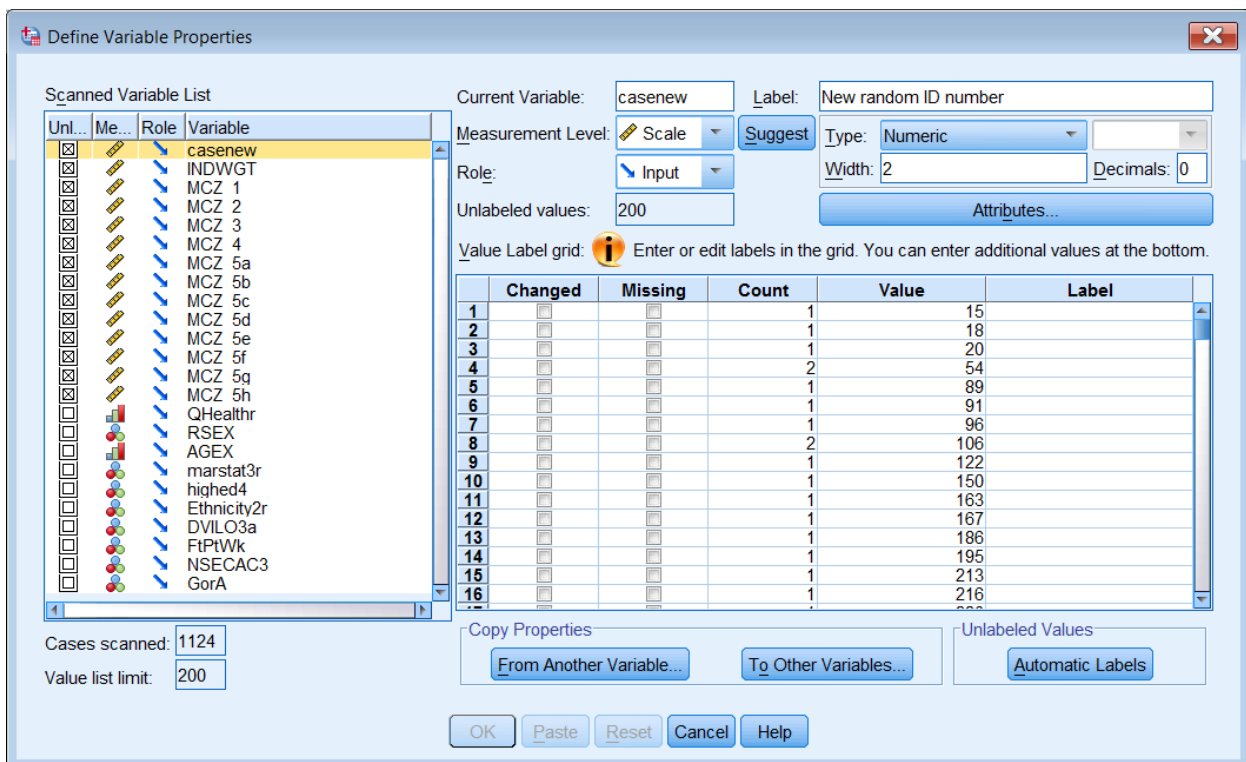


2: **Shift** click on the last variable  to highlight whole list

3: Click on blue arrow  to transfer the whole list to the other pane



Click on 



[Drag lower edge down if whole list is not displayed]

Clicking on any variable in the list displays all properties for that variable, including a **Count** of all values and indicating any values to be treated as **Missing**.

Define Variable Properties

Scanned Variable List

Unl...	Me...	Role	Variable
<input checked="" type="checkbox"/>	<input checked="" type="checkbox"/>	<input checked="" type="checkbox"/>	casenew
<input checked="" type="checkbox"/>	<input checked="" type="checkbox"/>	<input checked="" type="checkbox"/>	INDWGT
<input checked="" type="checkbox"/>	<input checked="" type="checkbox"/>	<input checked="" type="checkbox"/>	MCZ 1
<input checked="" type="checkbox"/>	<input checked="" type="checkbox"/>	<input checked="" type="checkbox"/>	MCZ 2
<input checked="" type="checkbox"/>	<input checked="" type="checkbox"/>	<input checked="" type="checkbox"/>	MCZ 3
<input checked="" type="checkbox"/>	<input checked="" type="checkbox"/>	<input checked="" type="checkbox"/>	MCZ 4
<input checked="" type="checkbox"/>	<input checked="" type="checkbox"/>	<input checked="" type="checkbox"/>	MCZ 5a
<input checked="" type="checkbox"/>	<input checked="" type="checkbox"/>	<input checked="" type="checkbox"/>	MCZ 5b
<input checked="" type="checkbox"/>	<input checked="" type="checkbox"/>	<input checked="" type="checkbox"/>	MCZ 5c
<input checked="" type="checkbox"/>	<input checked="" type="checkbox"/>	<input checked="" type="checkbox"/>	MCZ 5d
<input checked="" type="checkbox"/>	<input checked="" type="checkbox"/>	<input checked="" type="checkbox"/>	MCZ 5e
<input checked="" type="checkbox"/>	<input checked="" type="checkbox"/>	<input checked="" type="checkbox"/>	MCZ 5f
<input checked="" type="checkbox"/>	<input checked="" type="checkbox"/>	<input checked="" type="checkbox"/>	MCZ 5g
<input checked="" type="checkbox"/>	<input checked="" type="checkbox"/>	<input checked="" type="checkbox"/>	MCZ 5h
<input checked="" type="checkbox"/>	<input checked="" type="checkbox"/>	<input checked="" type="checkbox"/>	<b>QHealthr</b>
<input type="checkbox"/>	<input type="checkbox"/>	<input type="checkbox"/>	RSEX
<input type="checkbox"/>	<input type="checkbox"/>	<input type="checkbox"/>	AGEX
<input type="checkbox"/>	<input type="checkbox"/>	<input type="checkbox"/>	marstat3r
<input type="checkbox"/>	<input type="checkbox"/>	<input type="checkbox"/>	highed4
<input type="checkbox"/>	<input type="checkbox"/>	<input type="checkbox"/>	Ethnicity2r
<input type="checkbox"/>	<input type="checkbox"/>	<input type="checkbox"/>	DVLO3a
<input type="checkbox"/>	<input type="checkbox"/>	<input type="checkbox"/>	F1PtWk
<input type="checkbox"/>	<input type="checkbox"/>	<input type="checkbox"/>	NSECAC3
<input type="checkbox"/>	<input type="checkbox"/>	<input type="checkbox"/>	GorA

Cases scanned: 1124  
Value list limit: 200

Current Variable: QHealthr    Label: How is your health in general

Measurement Level: Ordinal    Suggest    Type: Numeric    Width: 2    Decimals: 0

Role: Input    Unlabeled values: 0    Attributes...

Value Label grid: Enter or edit labels in the grid. You can enter additional values at the bottom.

	Changed	Missing	Count	Value	Label
1	<input type="checkbox"/>	<input type="checkbox"/>	442	1	Very good
2	<input type="checkbox"/>	<input type="checkbox"/>	433	2	Good
3	<input type="checkbox"/>	<input type="checkbox"/>	171	3	Fair
4	<input type="checkbox"/>	<input type="checkbox"/>	59	4	Bad
5	<input type="checkbox"/>	<input type="checkbox"/>	14	5	Very bad
6	<input type="checkbox"/>	<input type="checkbox"/>	5	98	Refusal
7	<input type="checkbox"/>	<input checked="" type="checkbox"/>	0	99	D/K
8	<input type="checkbox"/>	<input type="checkbox"/>			

Copy Properties: From Another Variable...    To Other Variables...    Unlabeled Values: Automatic Labels

OK    Paste    Reset    Cancel    Help

The **Data** >> **Define Variable Properties** (DVP) facility was actually designed as a facility for building up a file, but it's also an incredibly useful tool to check the contents of an existing file.