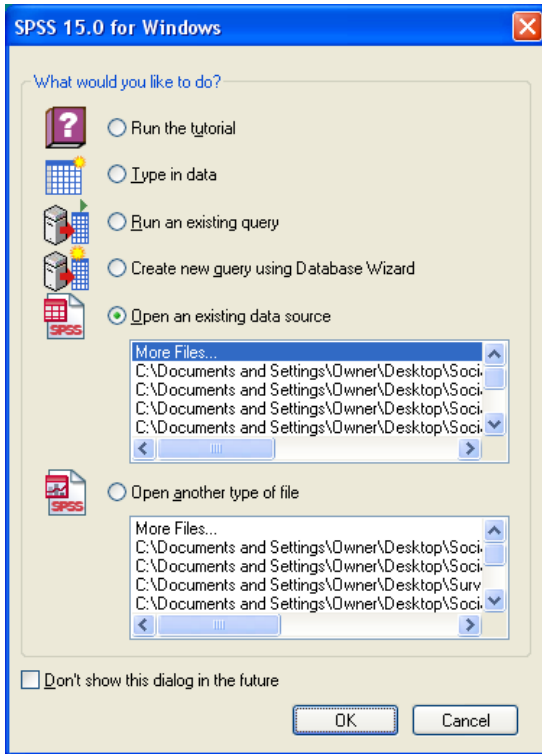
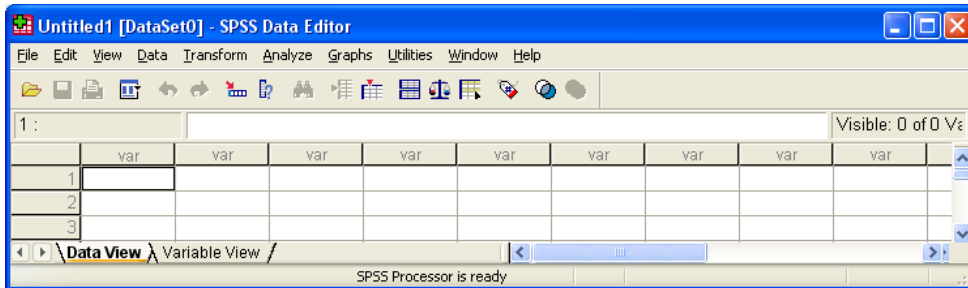


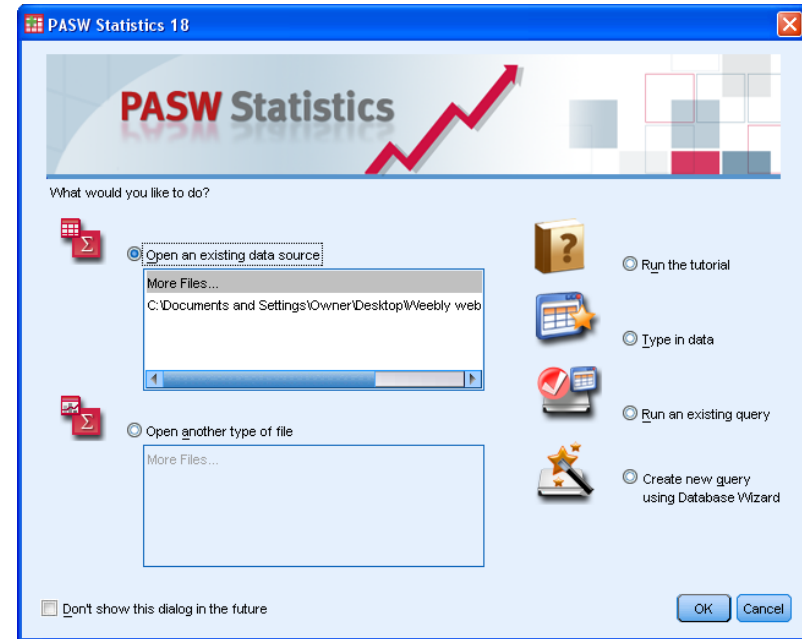
## SPSS 15



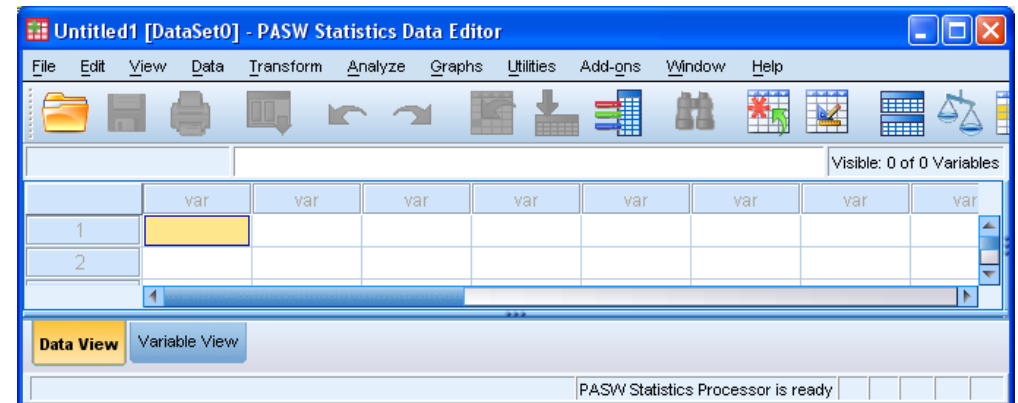
Data View (first time only, thereafter in whichever view last used)



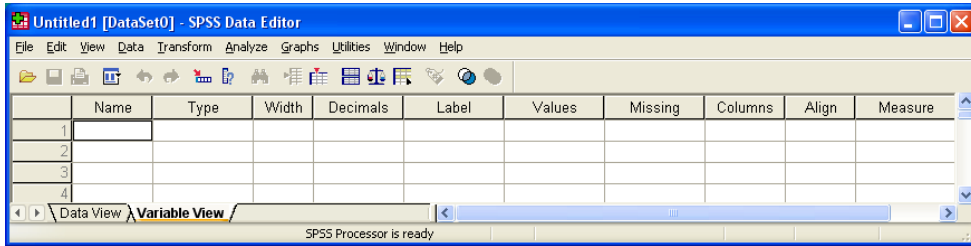
## PASW 18



Data View (first time only, thereafter in whichever view last used)

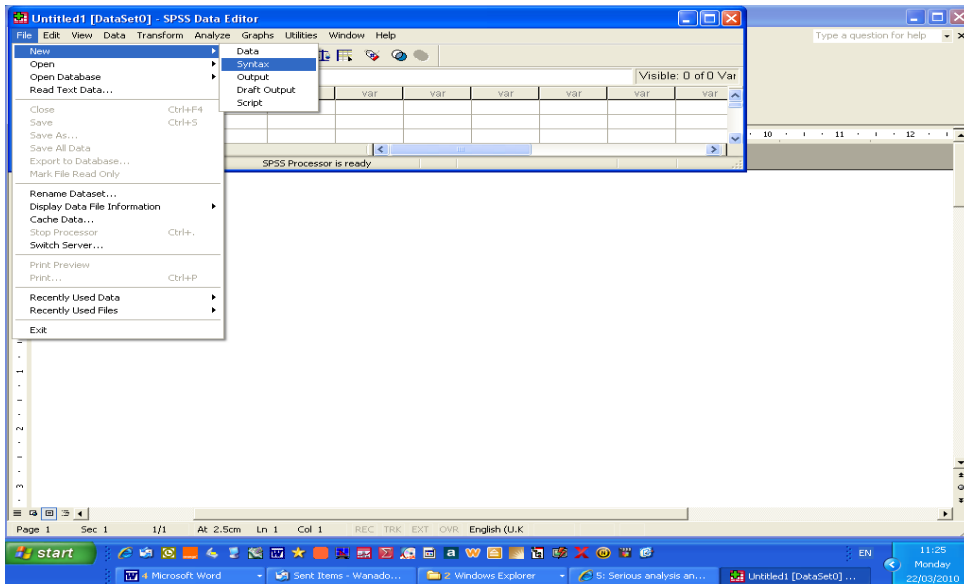


## Variable View



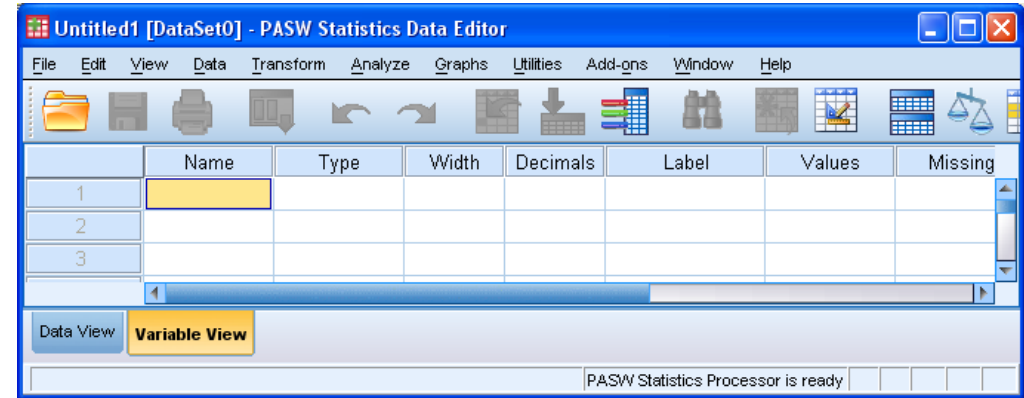
To open a new syntax file, click on:

**File**  
**New**  
**Syntax**



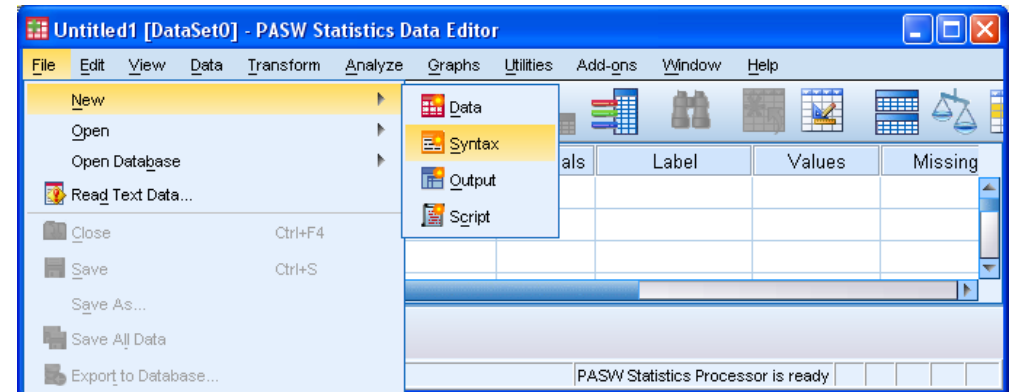
screen shot produced with [prt scr]

## Variable View



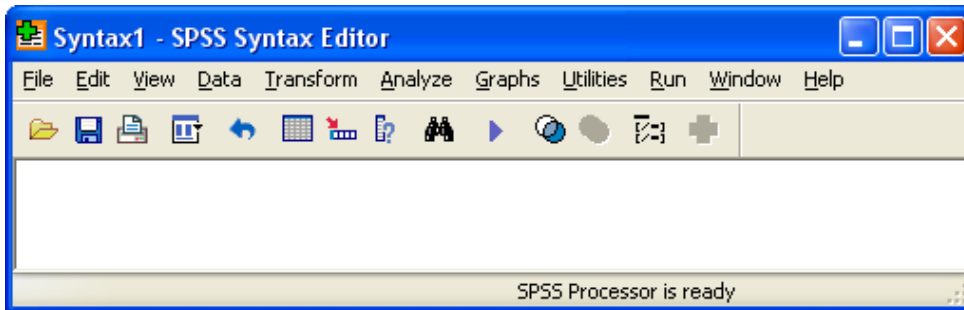
To open a new syntax file, click on:

**File**  
**New**  
**Syntax**

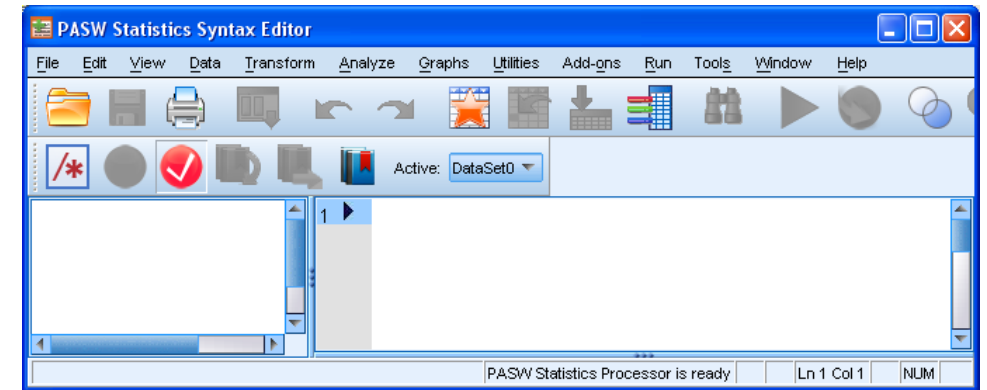


screen shot produced with [ALT][prt scr]

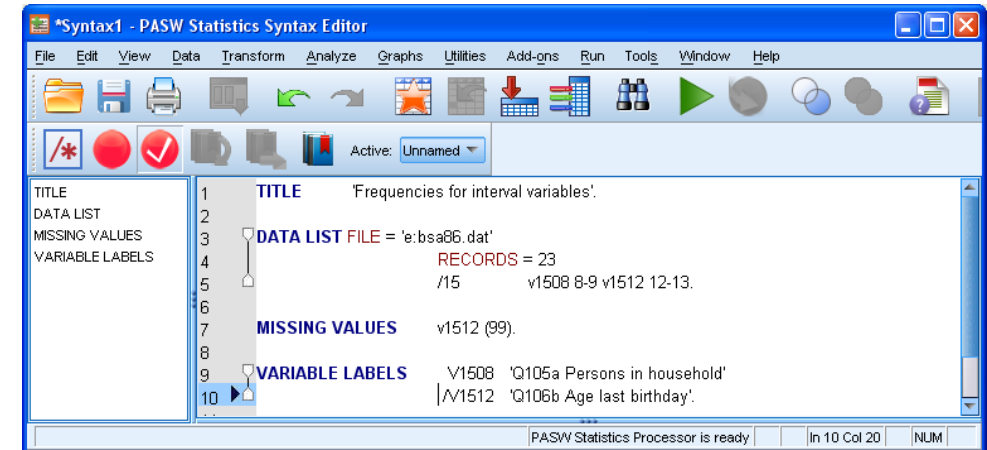
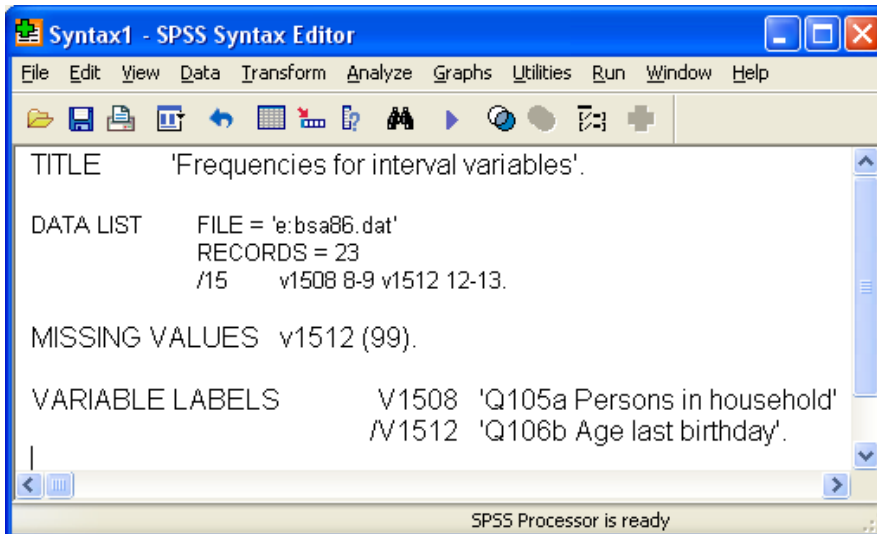
## Blank syntax file



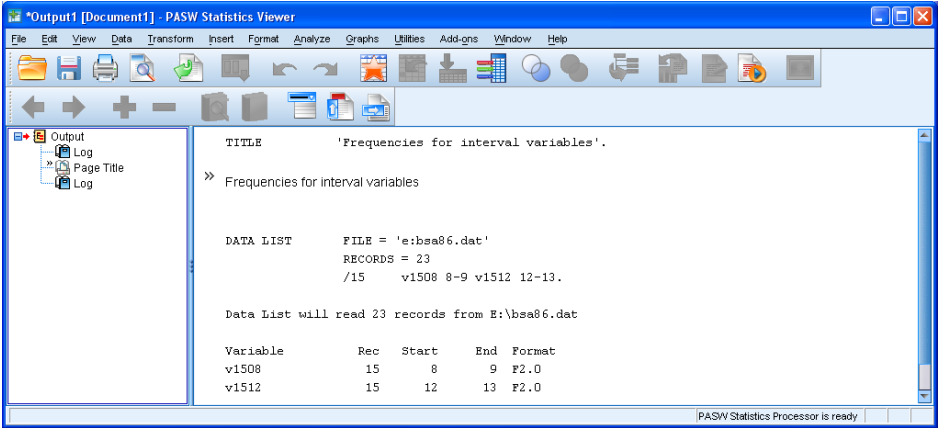
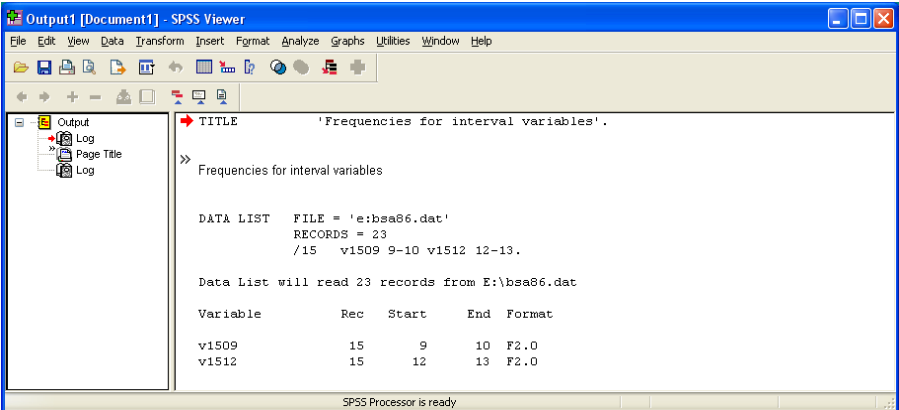
## Blank syntax file



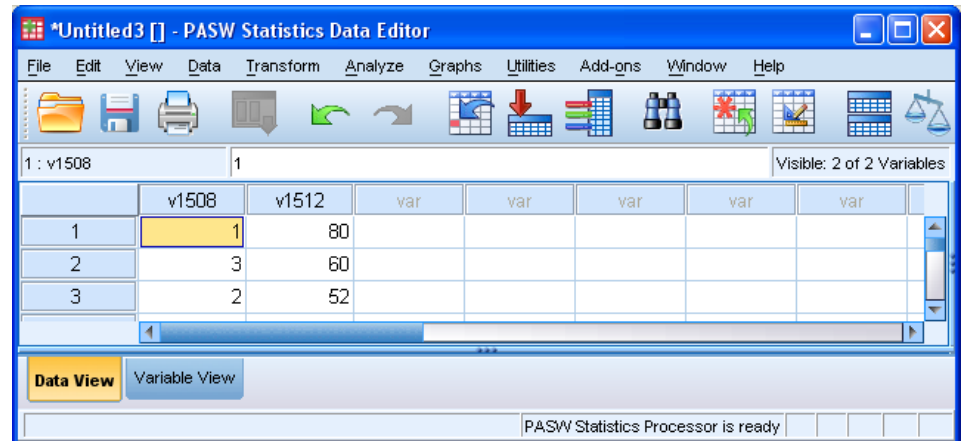
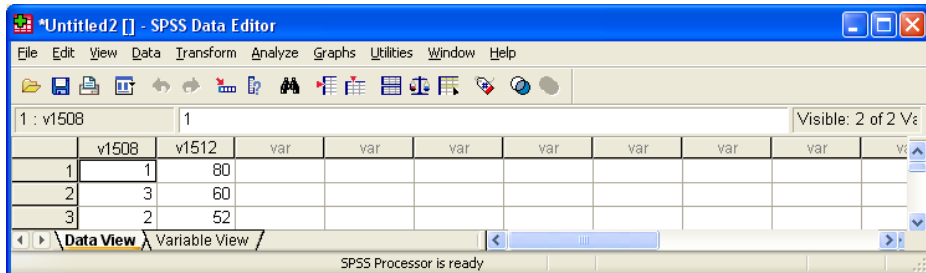
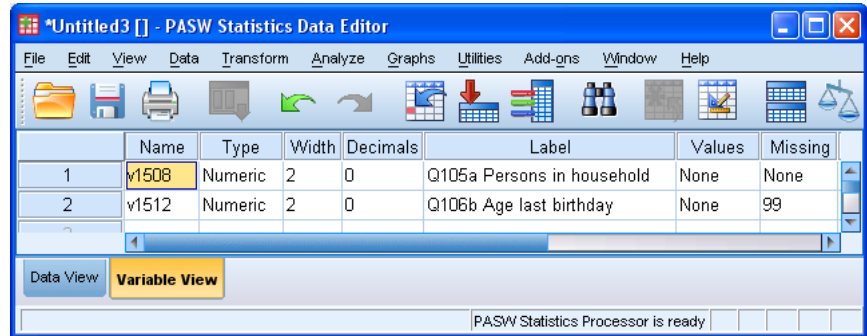
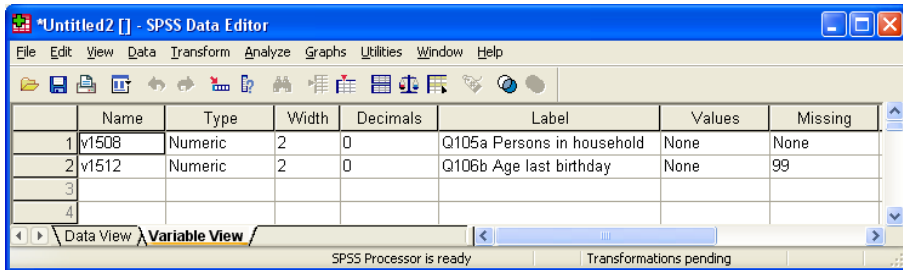
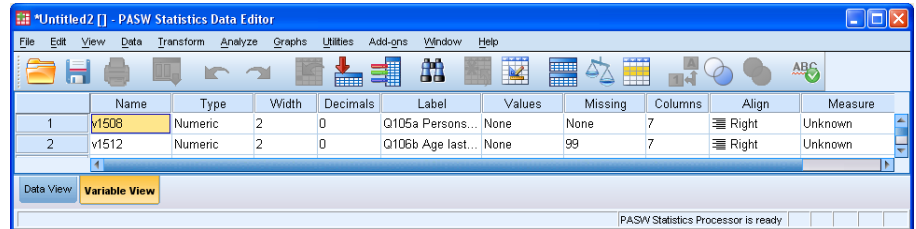
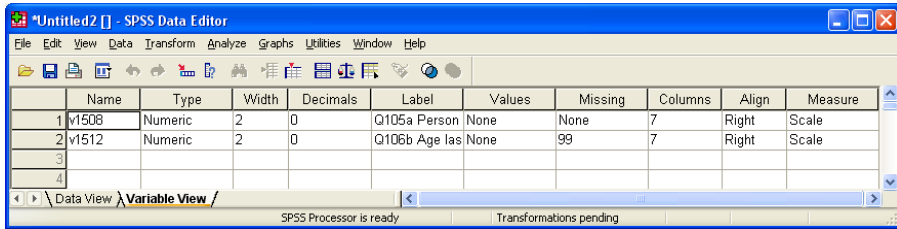
## Comparison of syntax displays



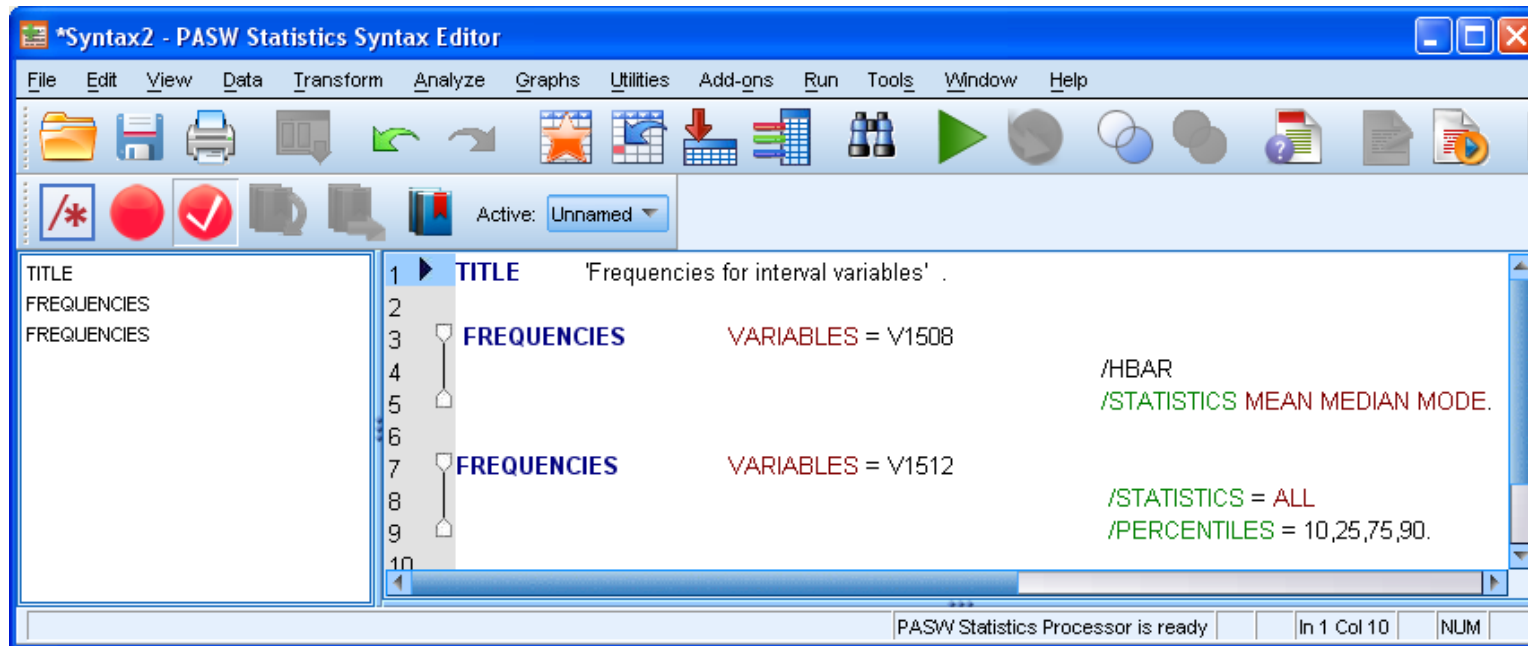
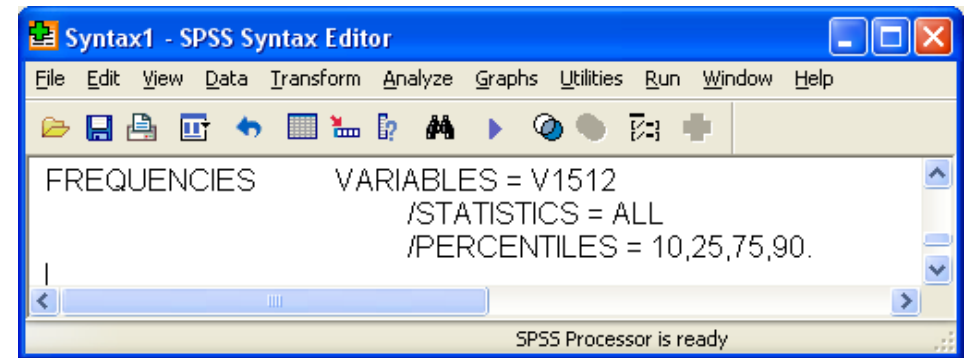
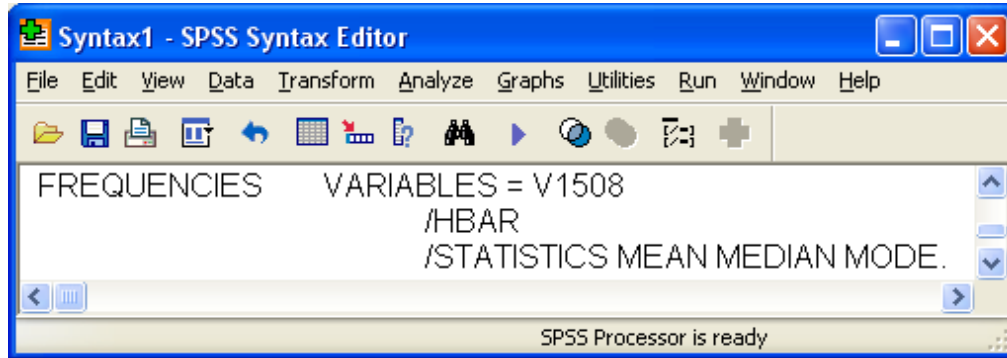
# Comparison of output displays

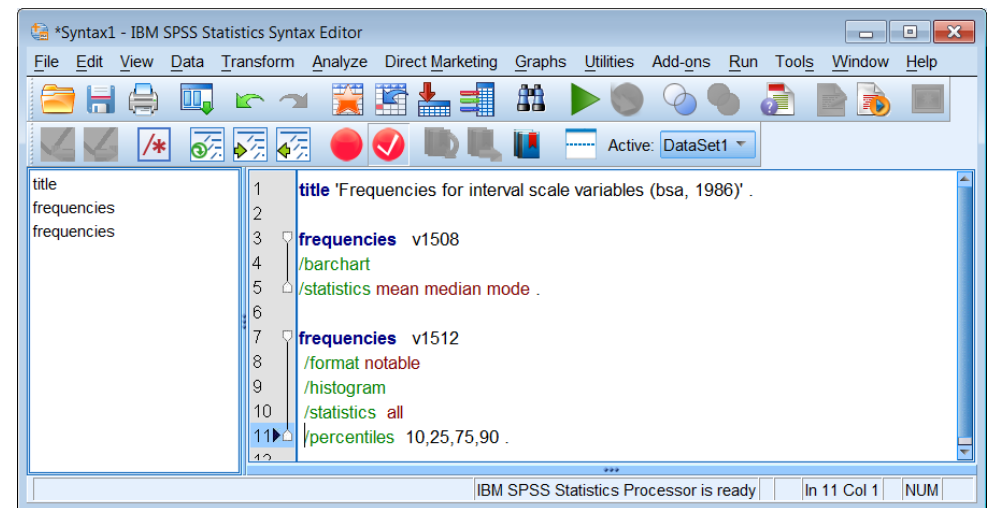
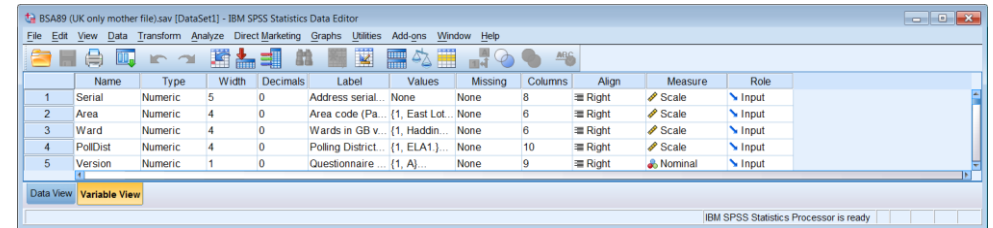
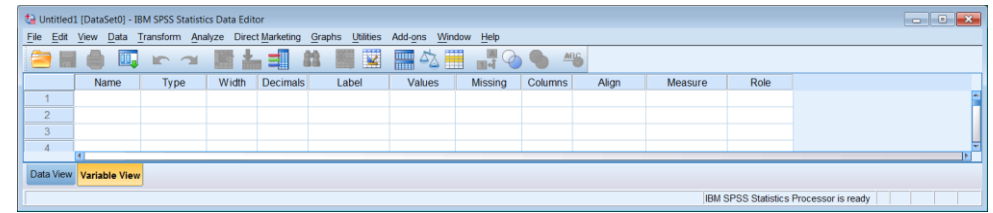
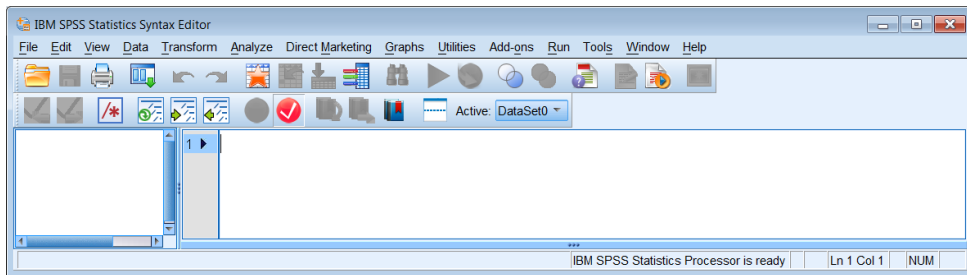
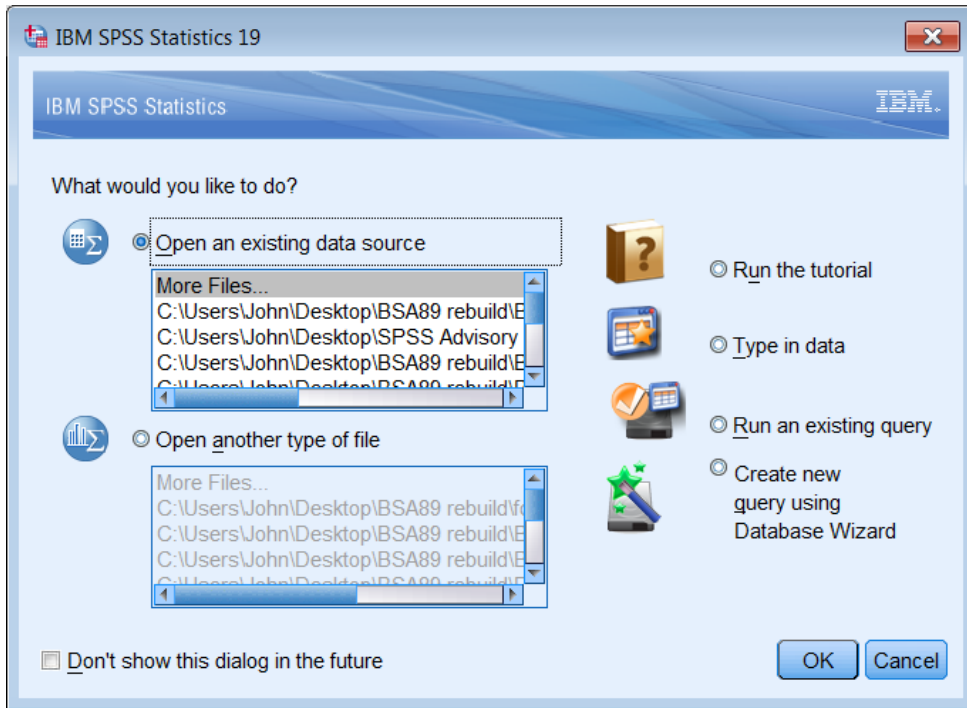


# Comparison of Data Editor displays



## New automatic colour coding for syntax

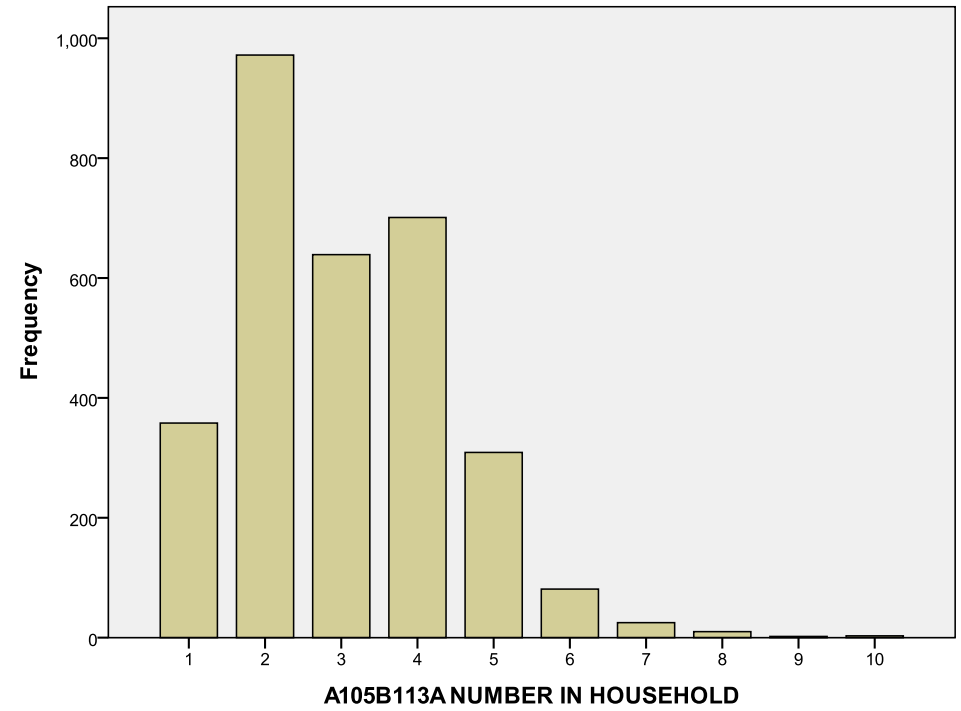




**v1508 A105B113A NUMBER IN HOUSEHOLD**

		Frequency	Percent	Valid Percent	Cumulative Percent
Valid	1	358	11.5	11.5	11.5
	2	972	31.4	31.4	42.9
	3	639	20.6	20.6	63.5
	4	701	22.6	22.6	86.1
	5	309	10.0	10.0	96.1
	6	81	2.6	2.6	98.7
	7	25	.8	.8	99.5
	8	10	.3	.3	99.8
	9	2	.1	.1	99.9
	10	3	.1	.1	100.0
Total		3100	100.0	100.0	

**A105B113A NUMBER IN HOUSEHOLD**





**Statistics**

v1512 A106B114B RESPONDENTS AGE

N	Valid	3097
	Missing	3
Mean		45.23
Std. Error of Mean		.315
Median		43.00
Mode		18 <sup>a</sup>
Std. Deviation		17.556
Variance		308.209
Skewness		.334
Std. Error of Skewness		.044
Kurtosis		-.827
Std. Error of Kurtosis		.088
Range		79
Minimum		18
Maximum		97
Sum		140080
Percentiles	10	23.00
	25	31.00
	75	59.00
	90	71.00

a. Multiple modes exist. The smallest value is shown

